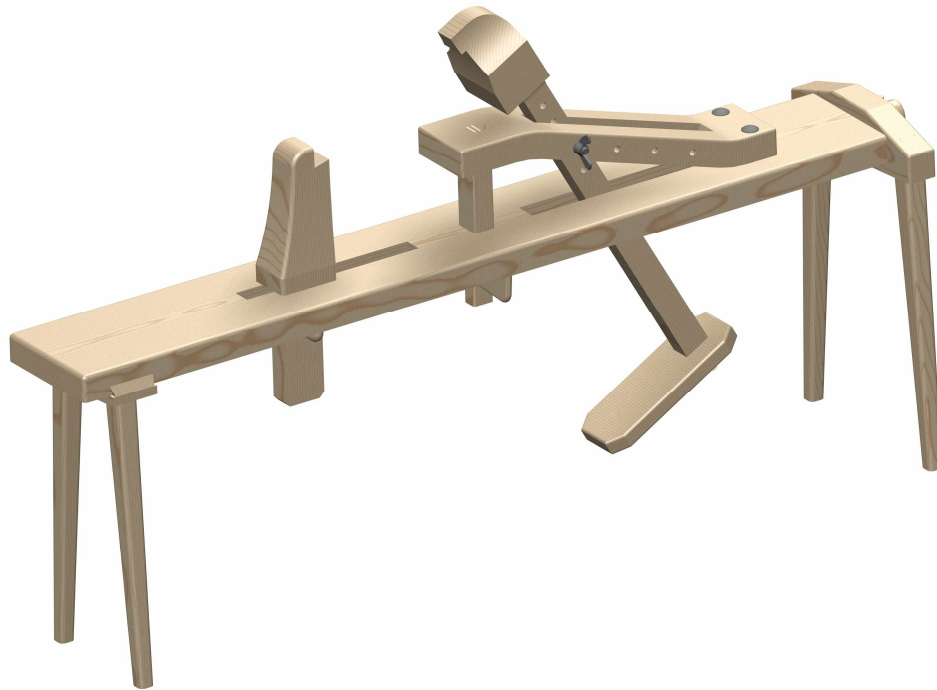


Shaving horse plan



When machines and power tools entered the workshops, some of the hand tools were almost completely pushed out of the use. This was also the case with shaving horse tool that once was an indispensable tool for carpenters, bodgers (chair makers), bowyers (bows makers) and coopers (barrel makers). The shaving horse is nowadays being used mostly by enthusiasts that still almost all the things make by hands (peeling rafters and purlins, to shape spindles for turning, chair legs, barrel staves, shingles, and the like), but this tool is also used by some specific crafts, like the guitar making – for making the neck of a guitar, and also for the rustic furniture manufacture or for green woodworking. Shaving horse can even today be a useful tool, because it has a wide range of use, especially if your type of work is based on small series. There are many designs of shaving horse, and each of them is used for some specific purpose. It is usually used with a drawknife or spokeshave, but can be adapted for use with other hand tools.

A shaving horse is an old woodworking tool used to hold a workpiece in a place while it is worked by a cutting tool such as spokeshave or drawknife. It holds slats, posts and rungs for shaving and drawknifing. Shaving horse is basically a workbench for shaping with a drawknife or spokeshave. Shaving horse consists out of the bench, on which the woodworker sits; the pedal operated clamp, whose function is to fasten the workpiece and the legs to support the shaving horse while it is being shaved. Pedal operated clamp part consists out of one platform (to support the work-piece while it is being shaved) and a swinging arm (pushed by the woodworker feet so as to grip the work-piece tight against the platform).

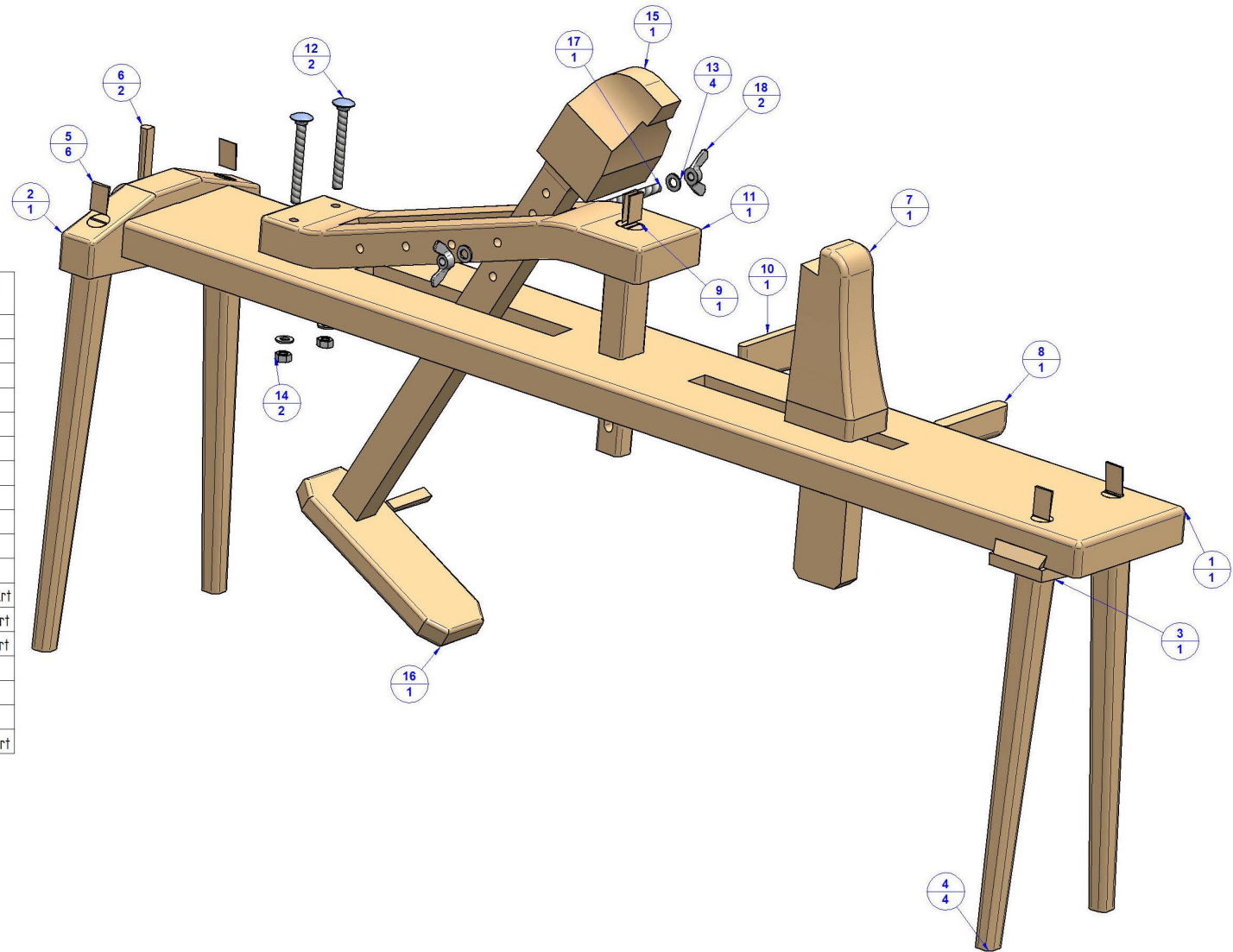
You can make the shaving horse out of the different types of wood, like durable hardwoods (oak, ash, elm, birch, beech, hickory, walnut, cherry...) or durable softwood (Douglas fir, cedar, hemlock, southern yellow or red pine...). We recommend a hard wood for making parts which have contact with the workpiece, so it would not wear during the work, and the rest of the parts can be made out some heavy wood, so the tool construction will provide a solid stability during the work. Of course, if you need the light tool (for portable shaving horse), you can make it out of the light durable wood.

Shaving horse is primarily a shop build tool, which is hard to find in the tool stores. Because of that, there are so many variations in its design. There are many good shaving horse plans that can be found on the internet and in woodworking books. We decided to present you a shaving horse plan which proved very well in the practice, and which differs from most shaving horse plans we have seen so far. If you make it properly, it will certainly last for a very long time. By manufacturing this shaving horse you will get one cheap, durable, practical, and comfortable tool, which will help you to manually overcome various work problems. Construction of this shaving horse is very simple, there are no complicated woodworking joints, and you can make it easily with the common tools, such as drill, saw... While it is possible to follow these shaving horse plans using only hand tools, a bandsaw and tablesaw are recommended. These plans and instructions assume an intermediate level of woodworking skills.

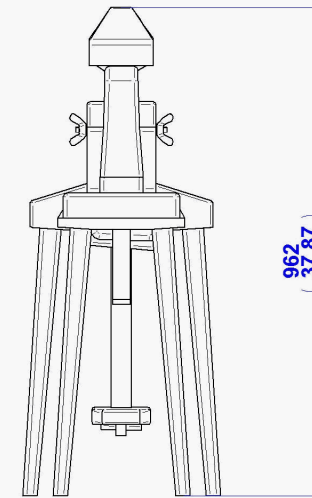
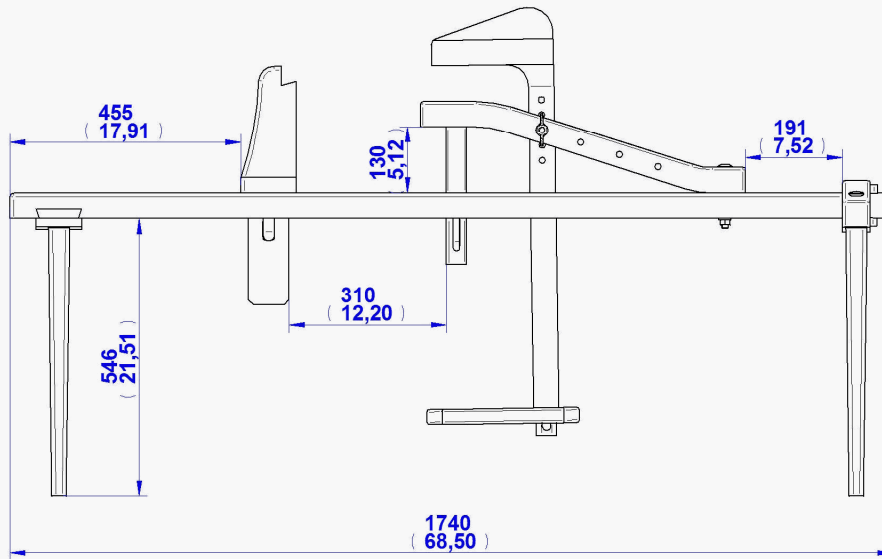
NOTE: The measurements within this text and 2D documentation are given both in millimeters and inches (in brackets).

PARTS LIST

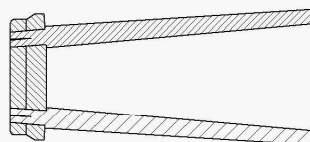
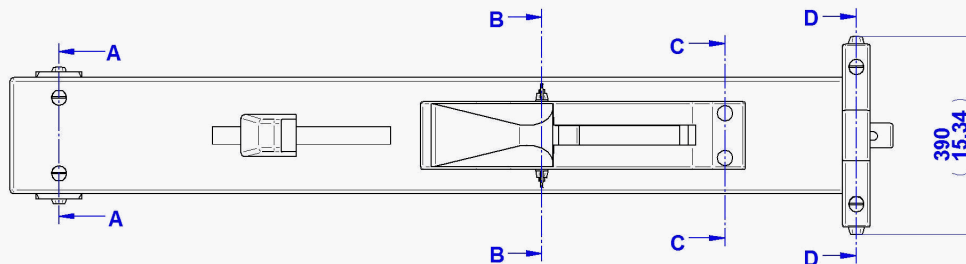
Item Number	Title	Material	Quantity	Category
1	Base	Wood	1	
2	Front Support	Wood	1	
3	Back Support	Wood	1	
4	Leg	Wood	4	
5	Thin Wedge	Wood	6	
6	Wedge	Wood	2	
7	Support	Wood	1	
8	Fitting Back	Wood	1	
9	Pillar	Wood	1	
10	Fitting Front	Wood	1	
11	Main Support	Wood	1	
12	Screw M12x120	Steel	2	Standard Part
13	Washer 12	Steel	4	Standard Part
14	Hexagon Nut M12	Steel	2	Standard Part
15	Lever	Wood	1	
16	Leg Plate	Wood	1	
17	Axle	Wood	1	
18	Wing Nut M12	Steel	2	Standard Part



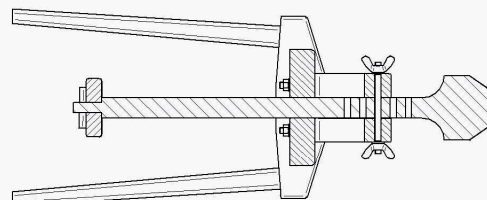
2D Documentation



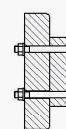
Varijant 1



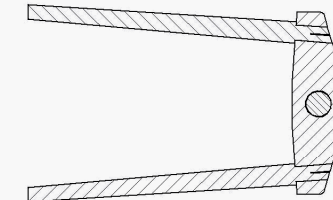
SECTION A-A



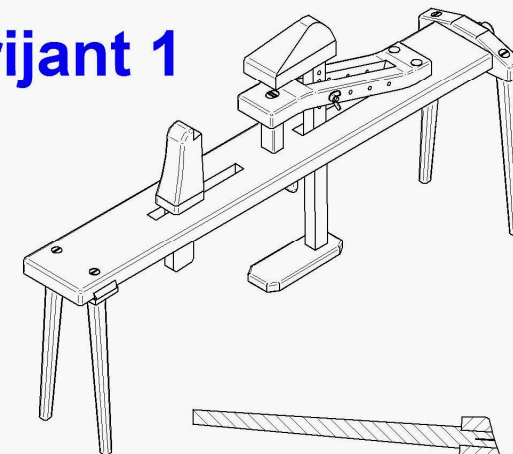
SECTION B-B

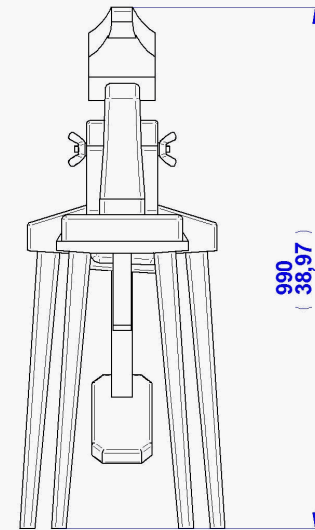
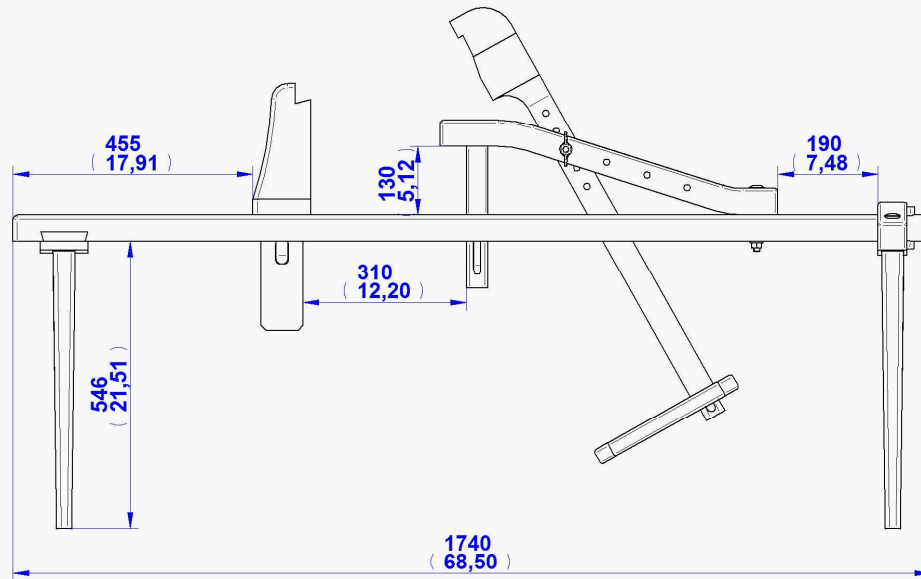


SECTION C-C

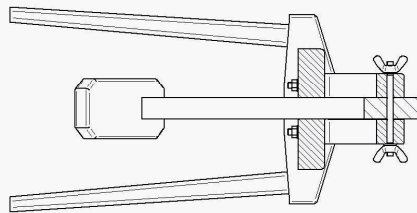
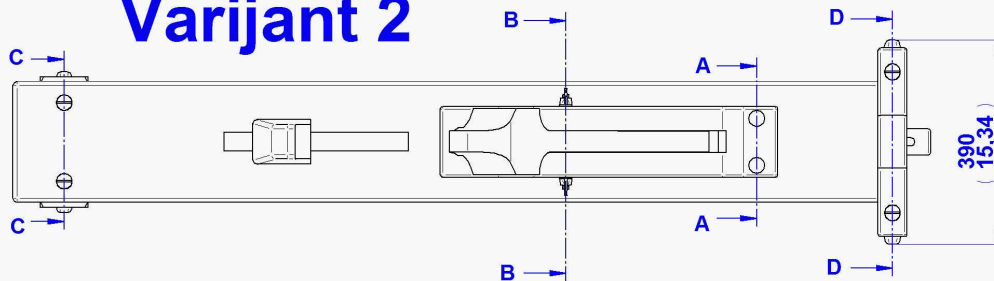


SECTION D-D

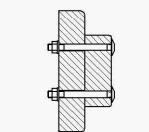




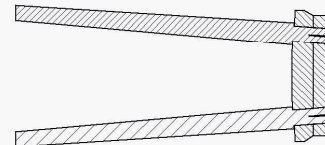
Varijant 2



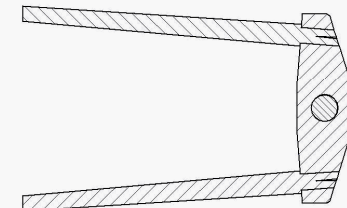
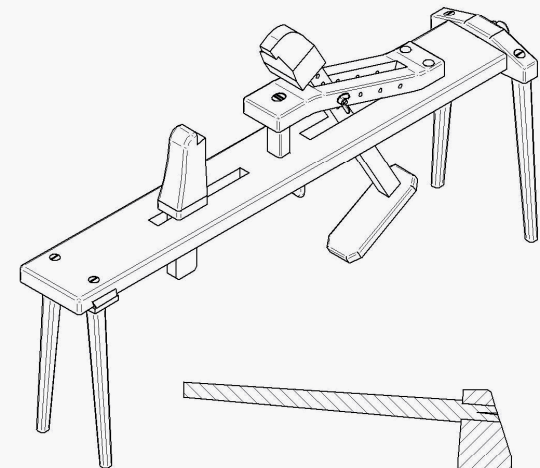
SECTION B-B



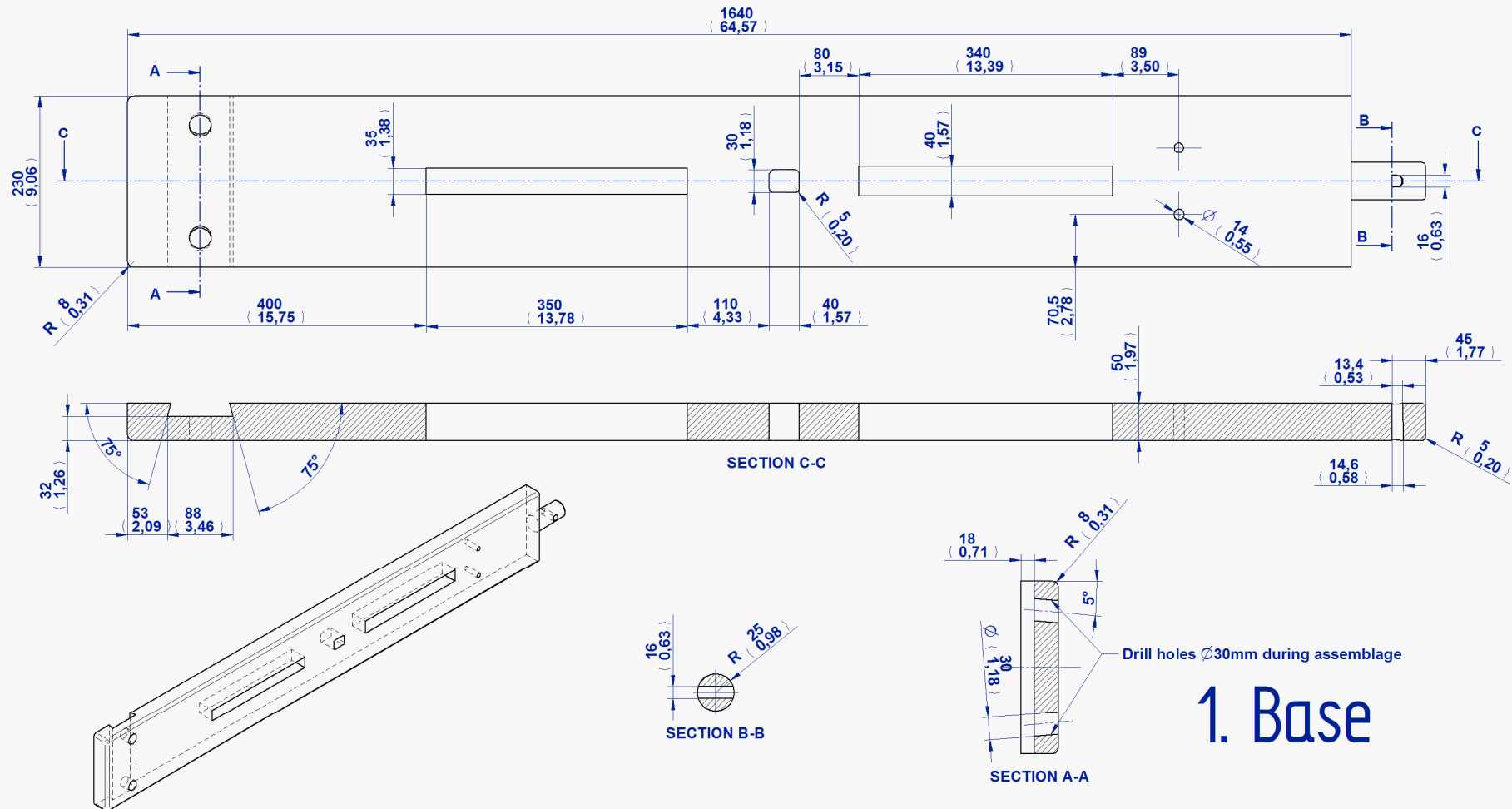
SECTION A-A



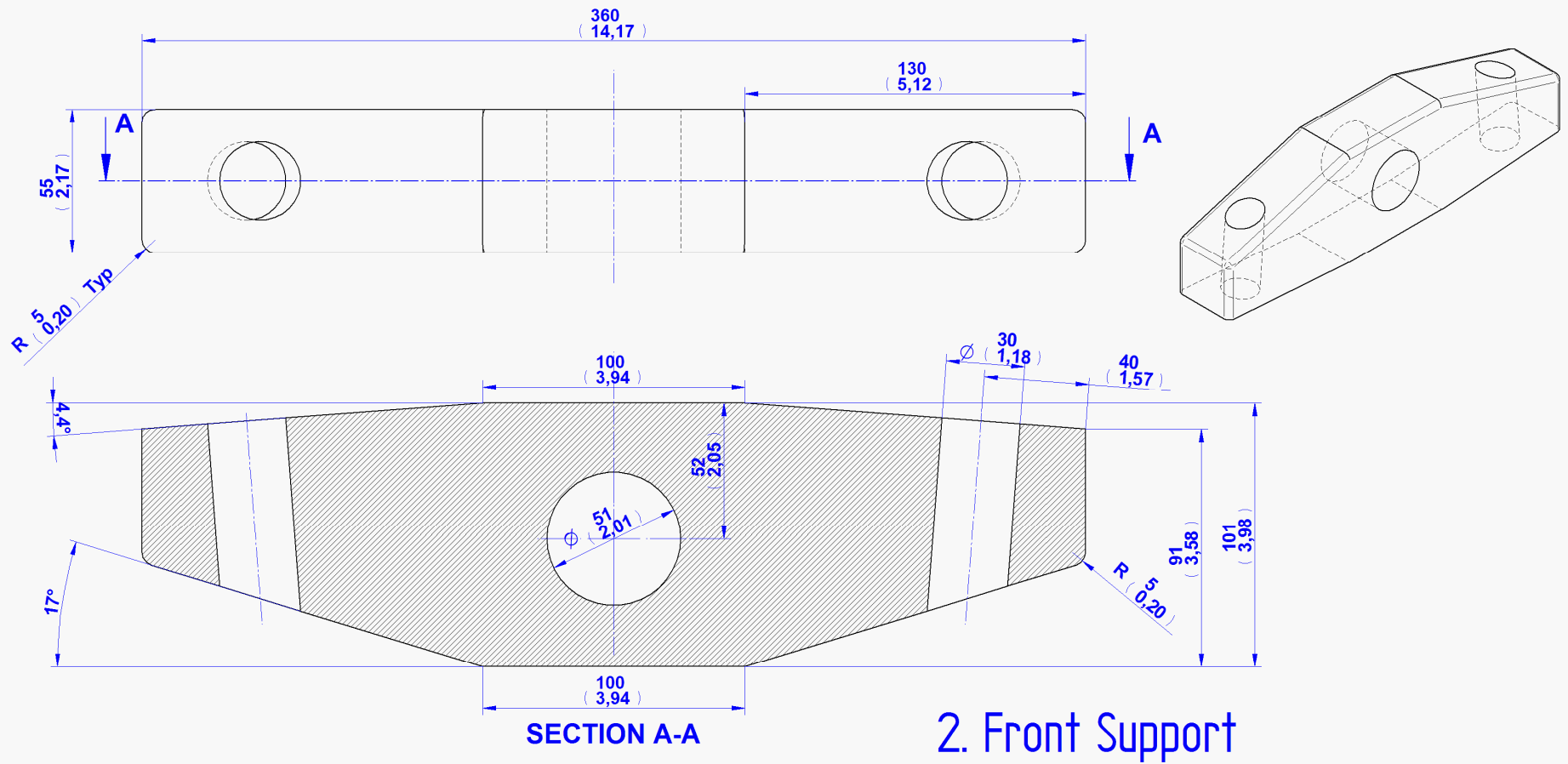
SECTION C-C

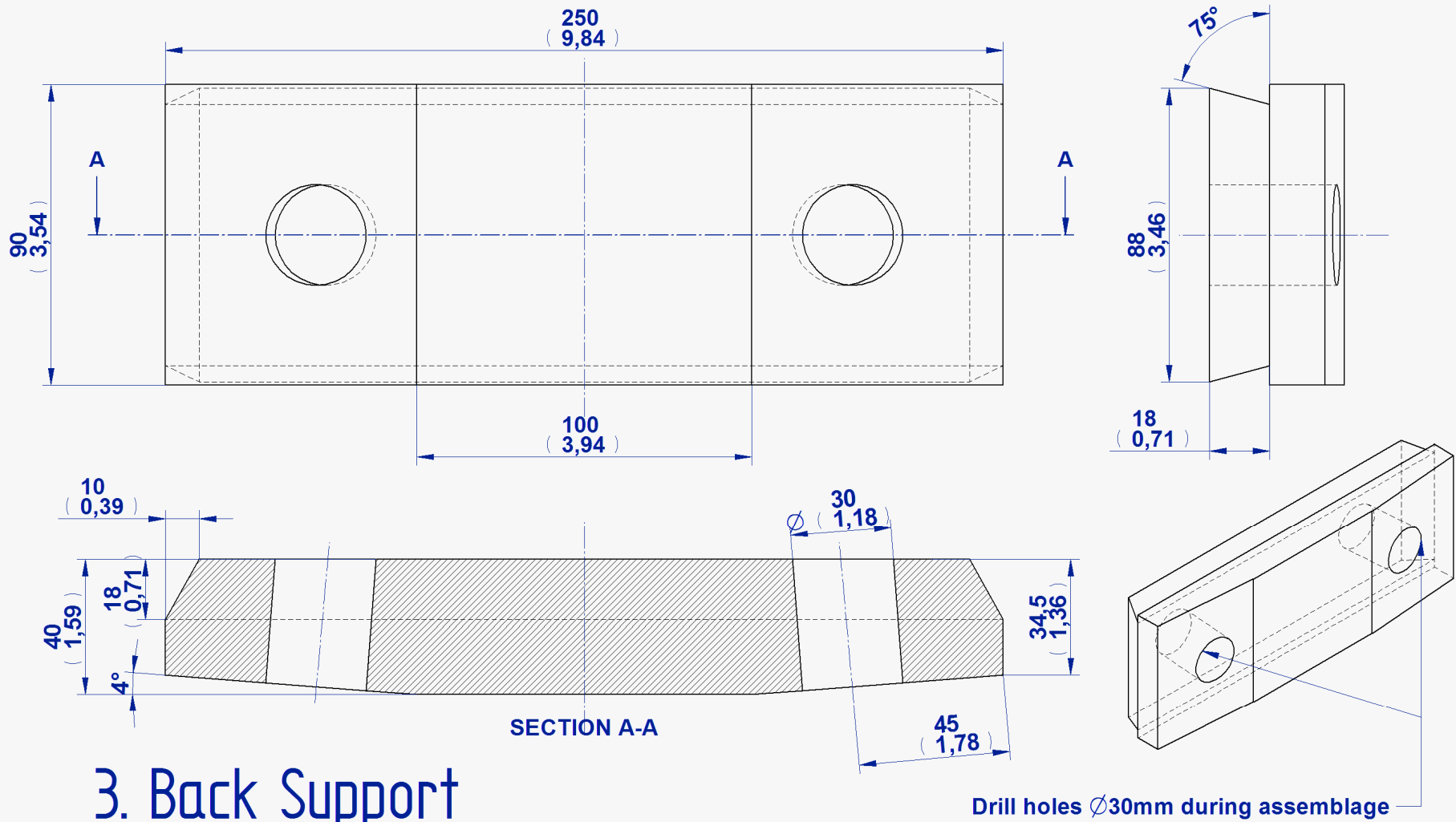


SECTION D-D

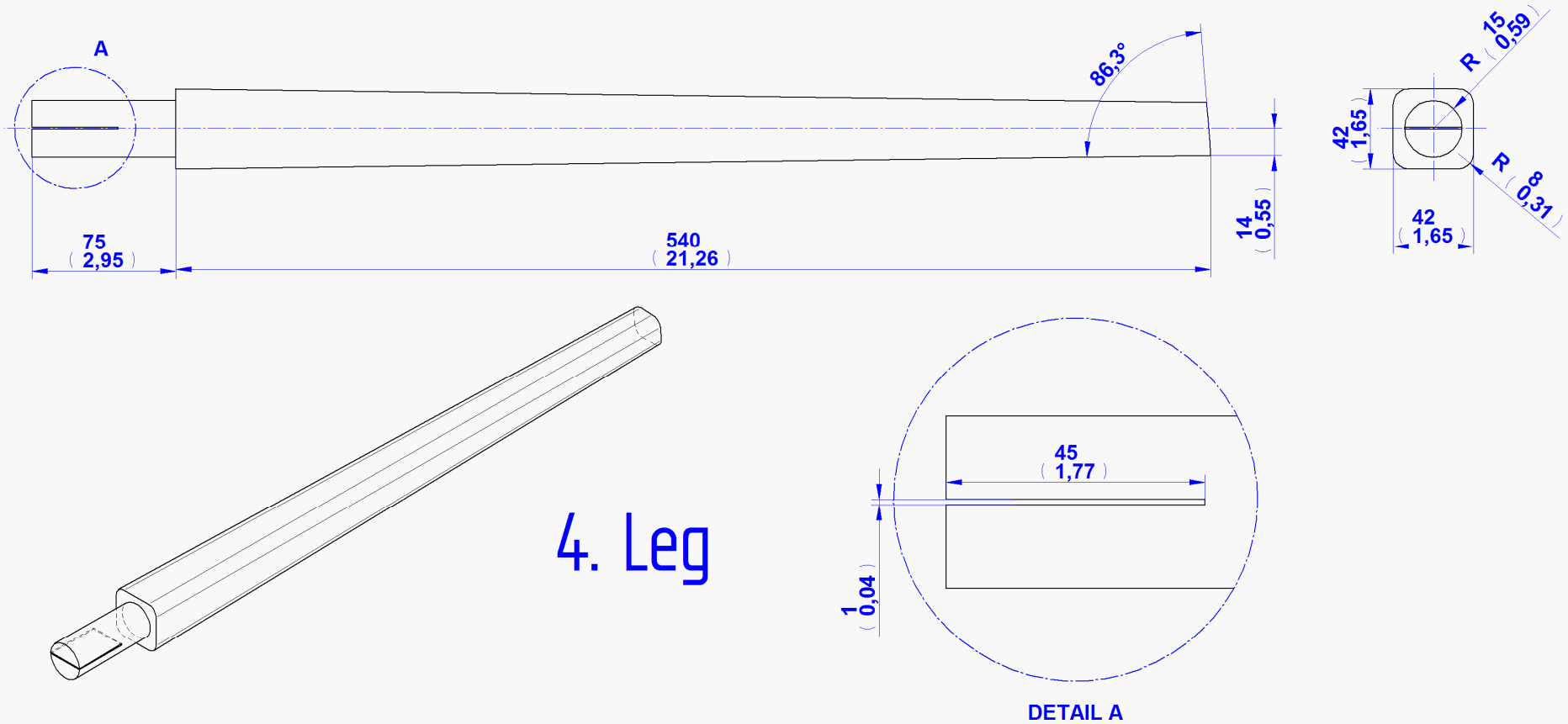


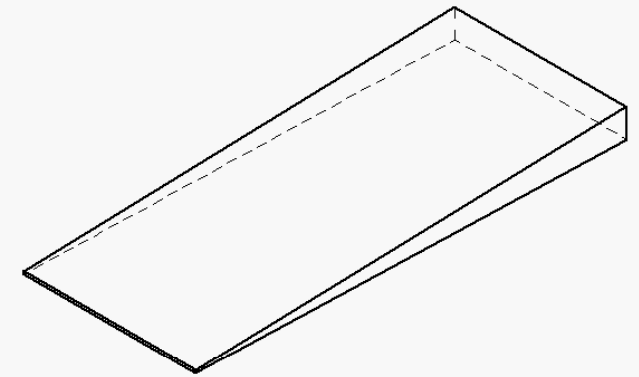
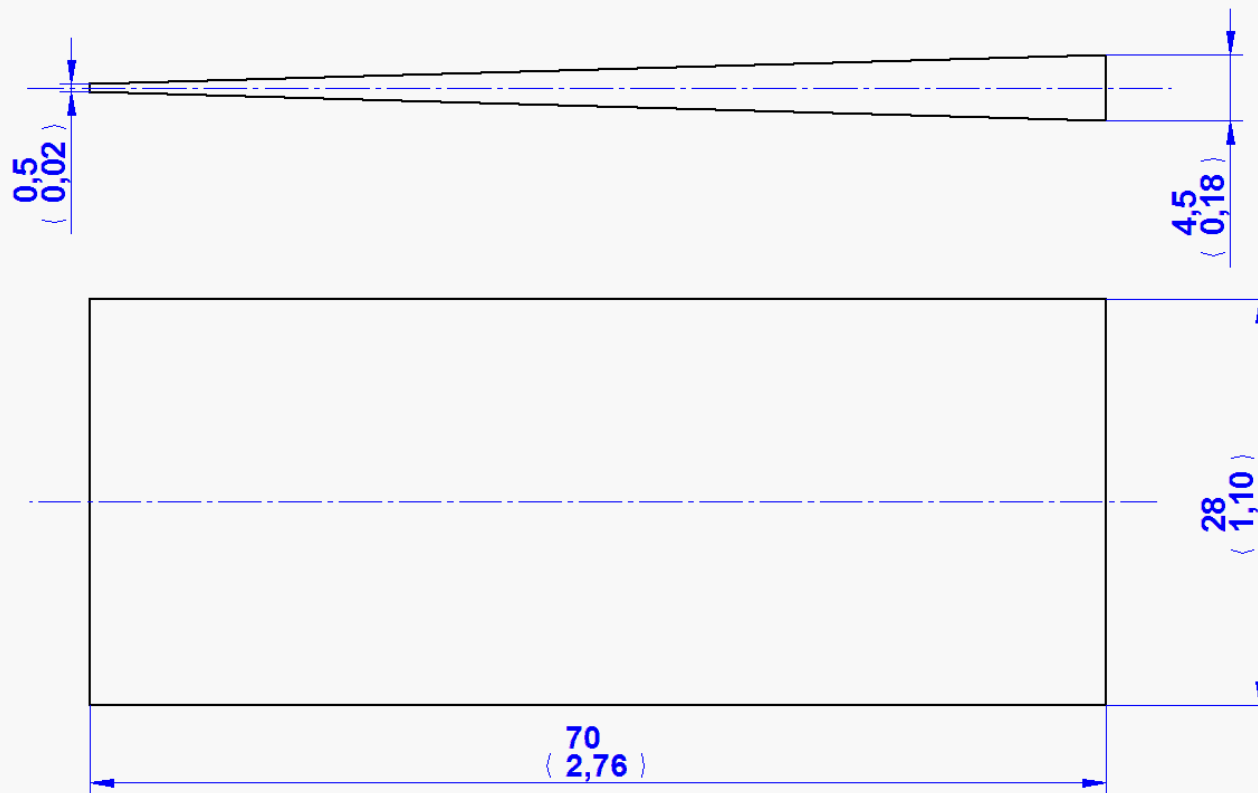
1. Base



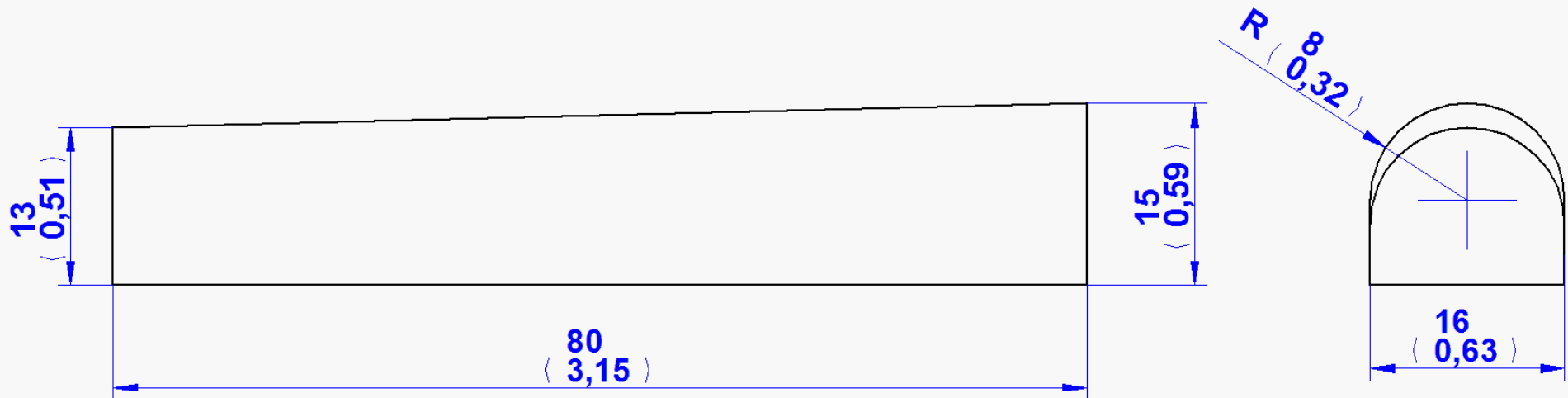


3. Back Support

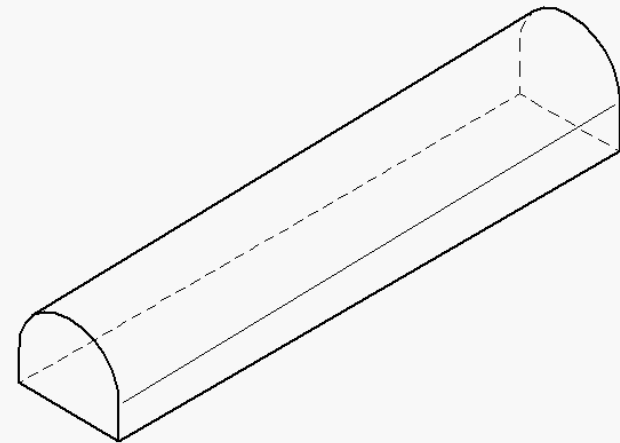


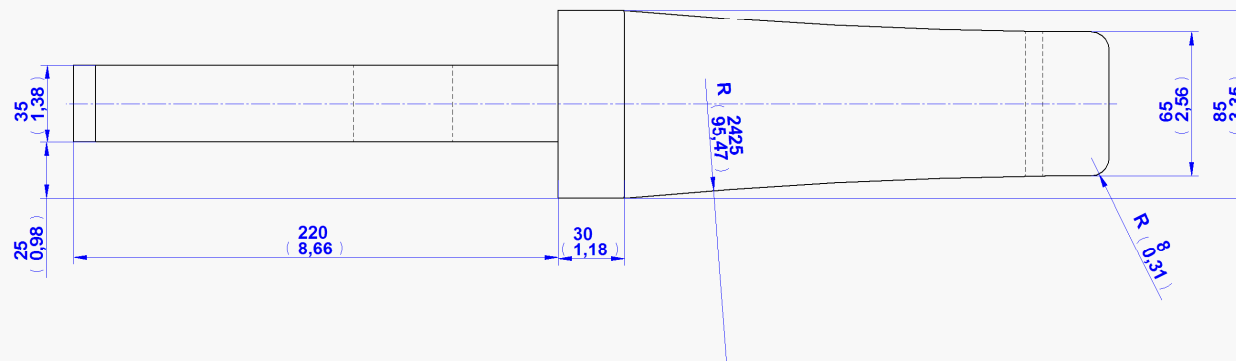
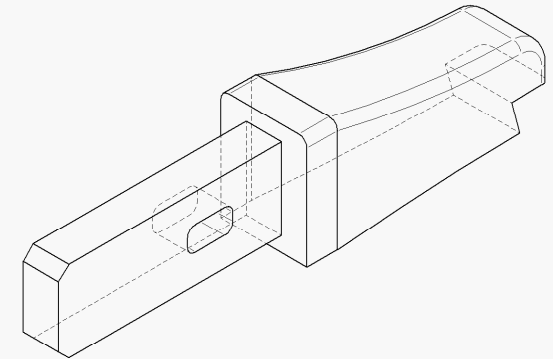
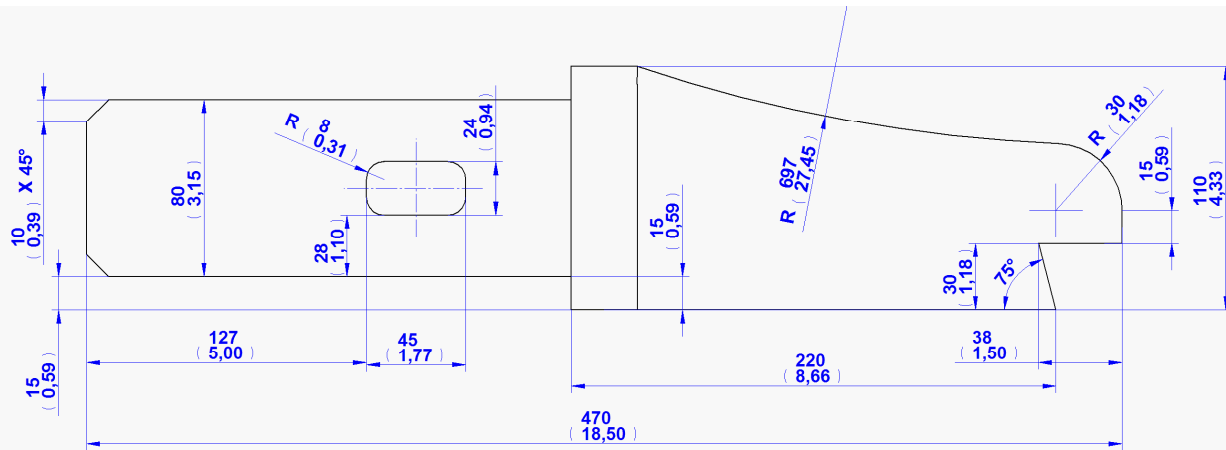


5. Thin Wedge

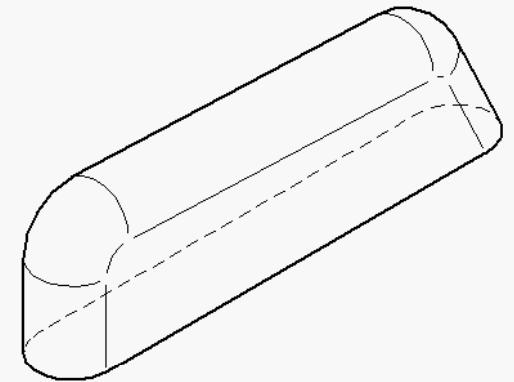
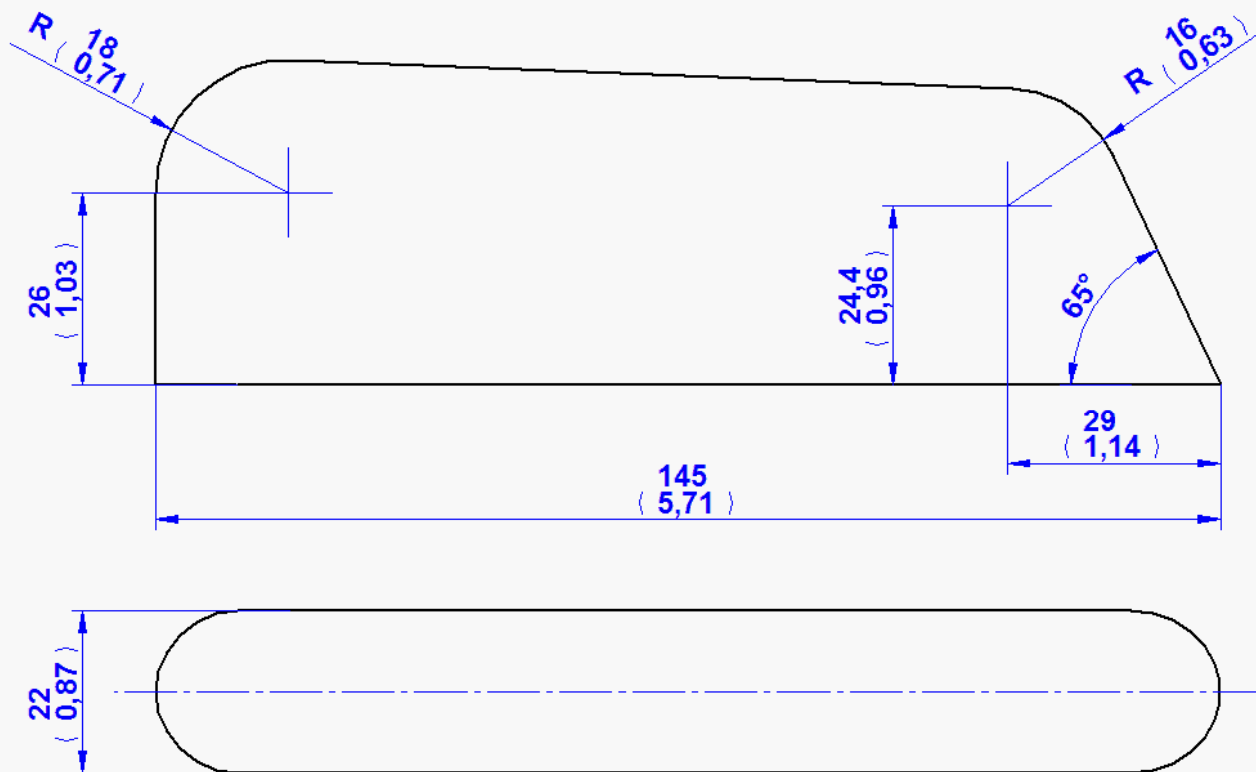


6. Wedge

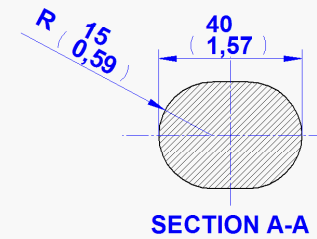
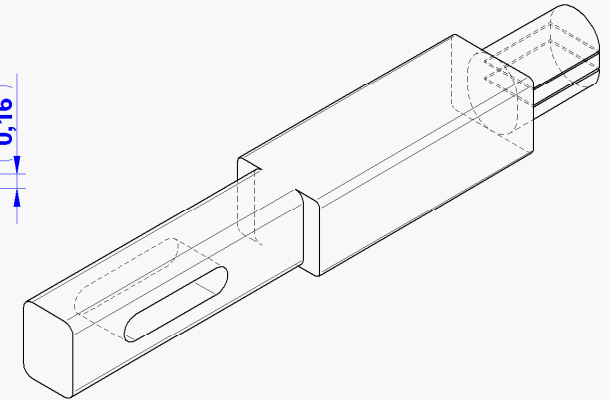
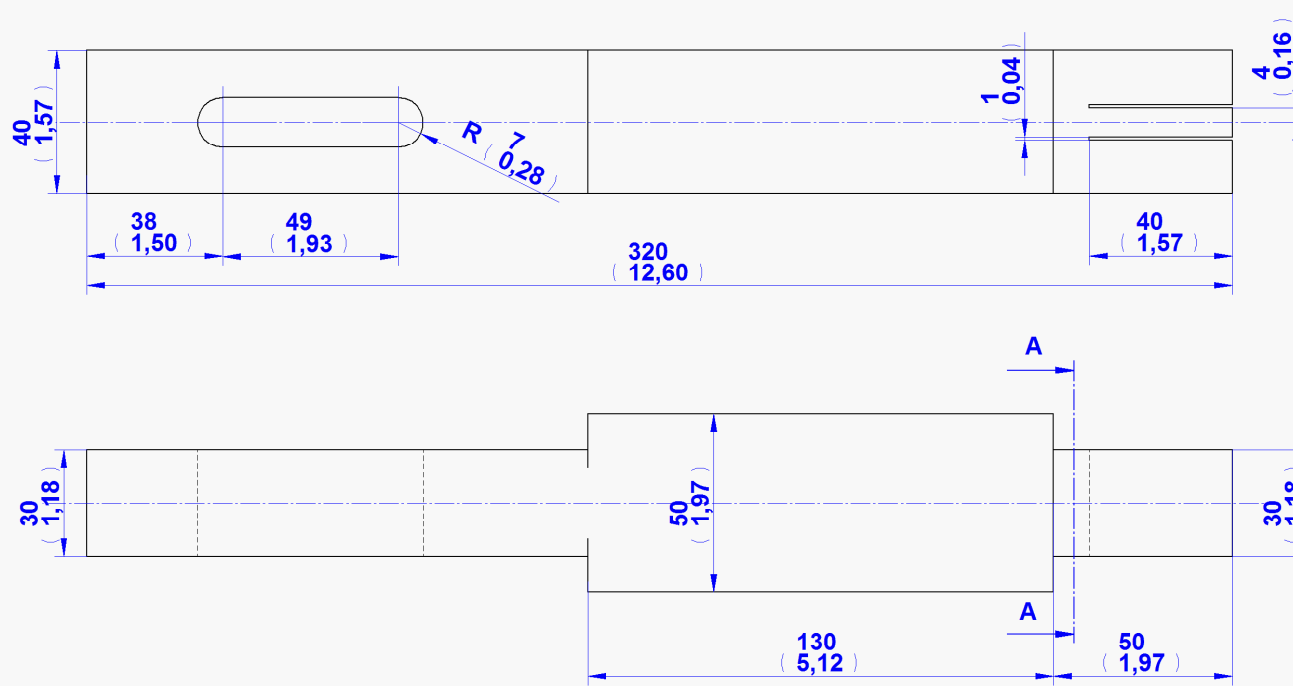




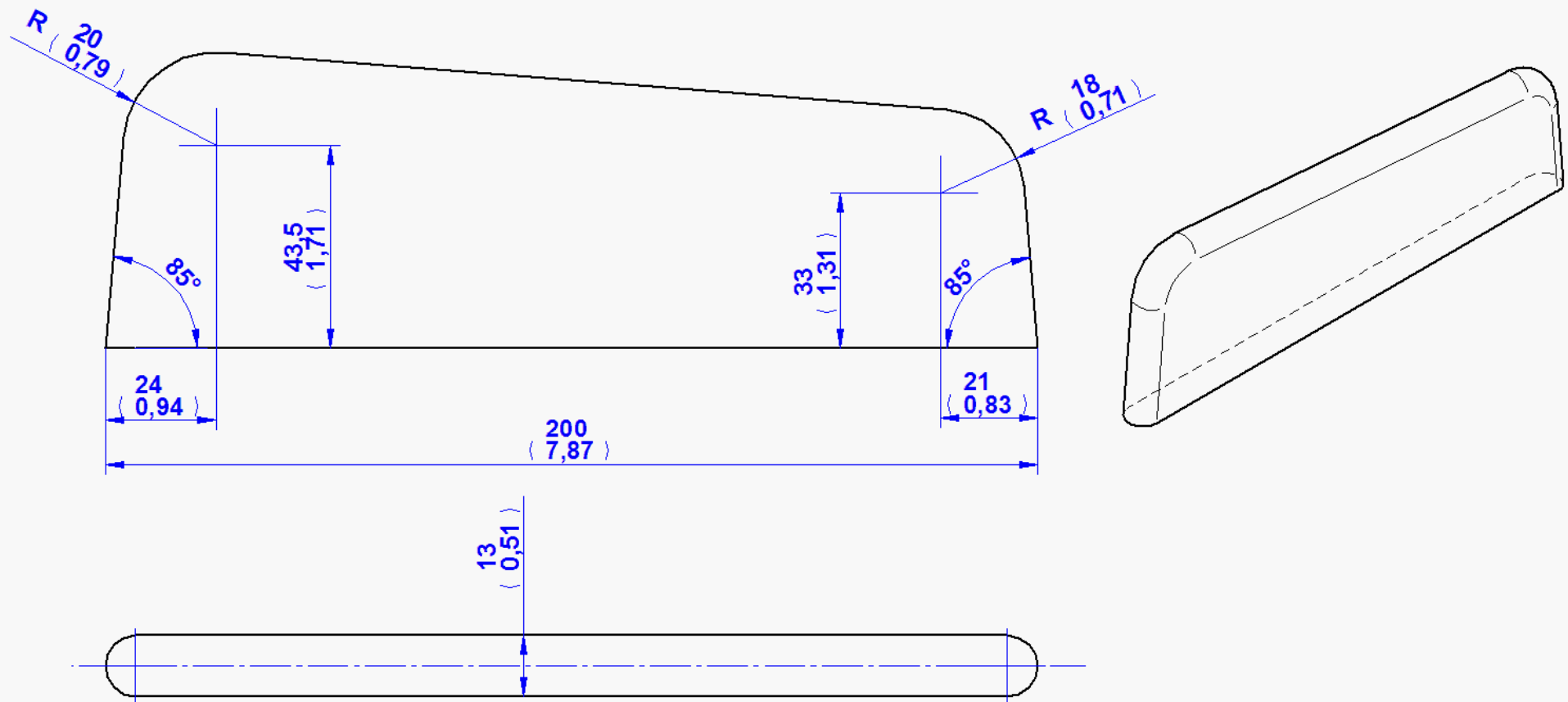
7. Back Support



8. Fitting Back

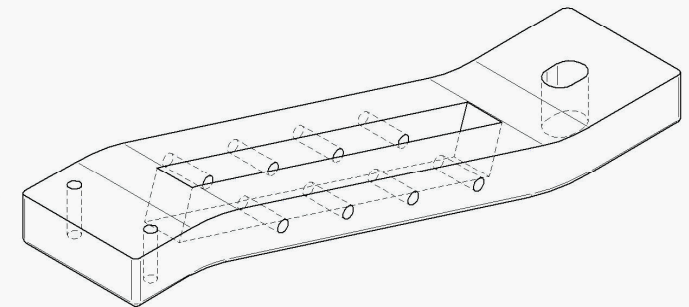
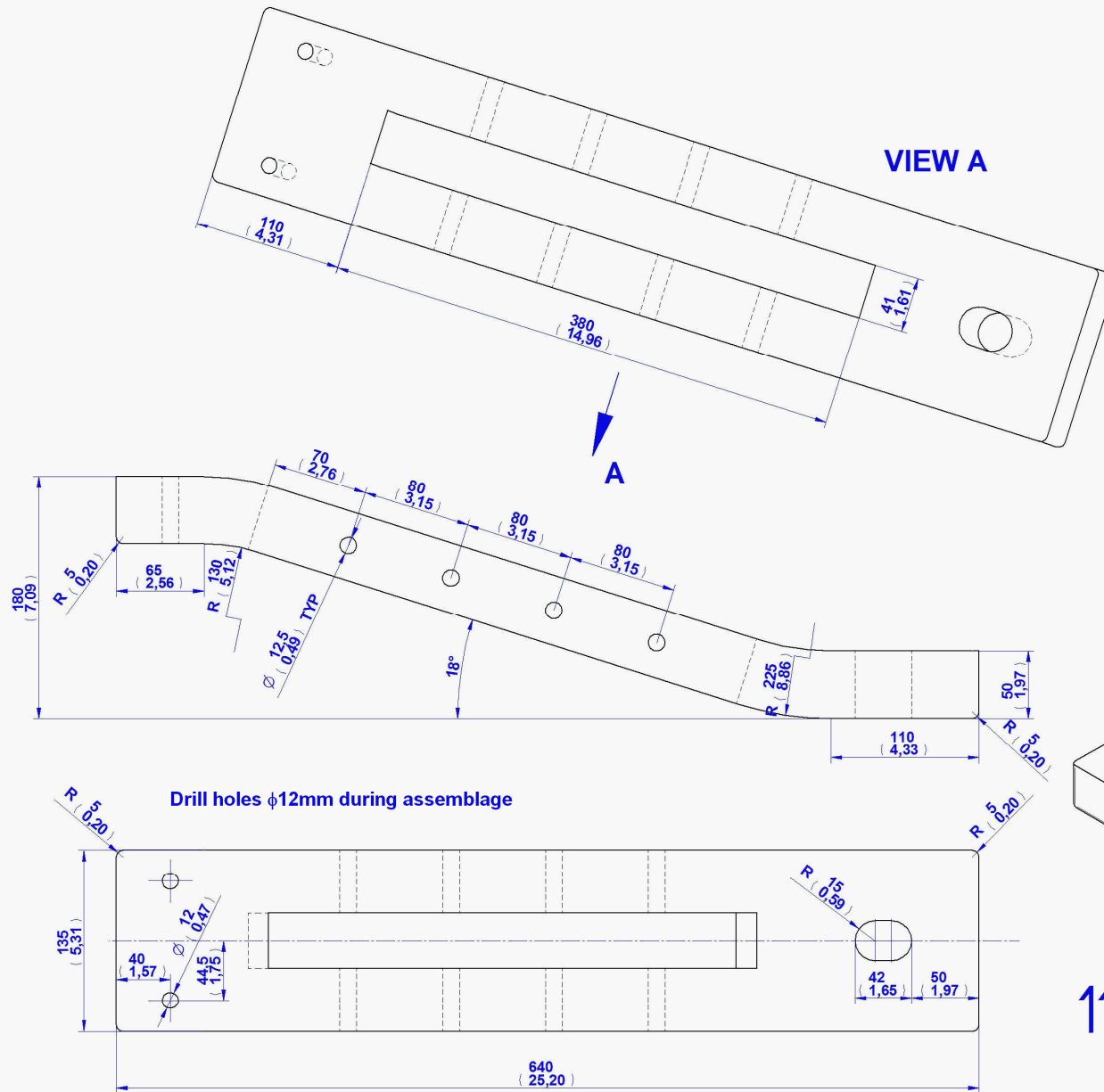


9. Pillar

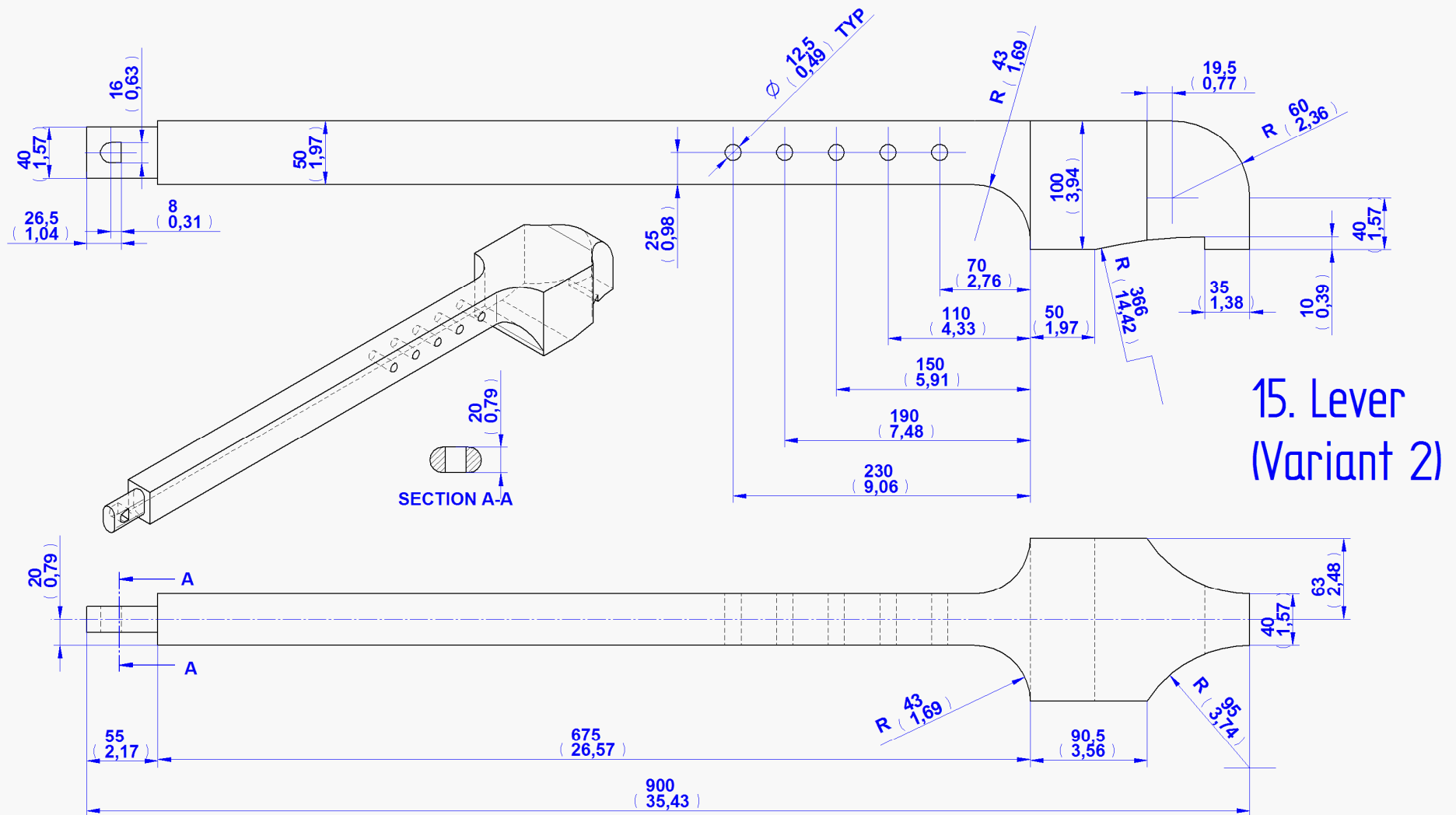


10. Fitting Front

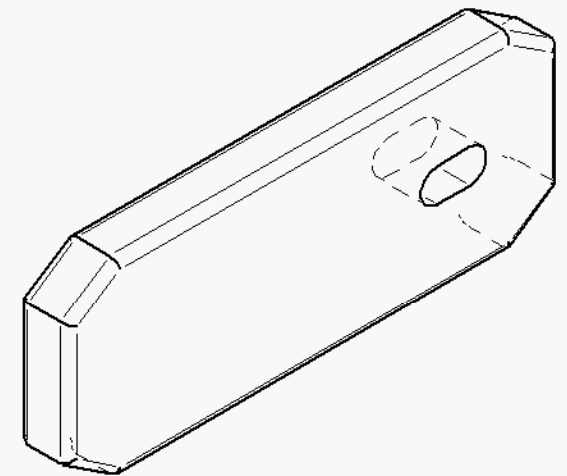
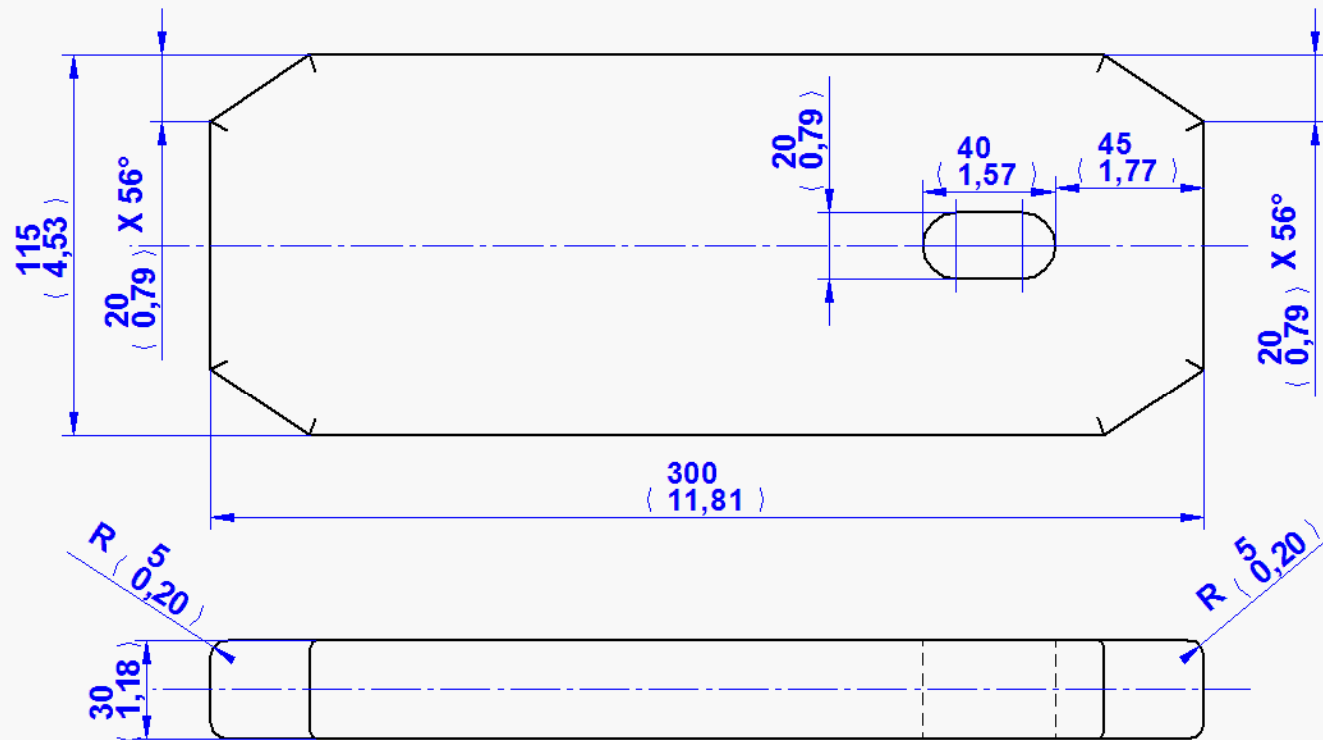
VIEW A



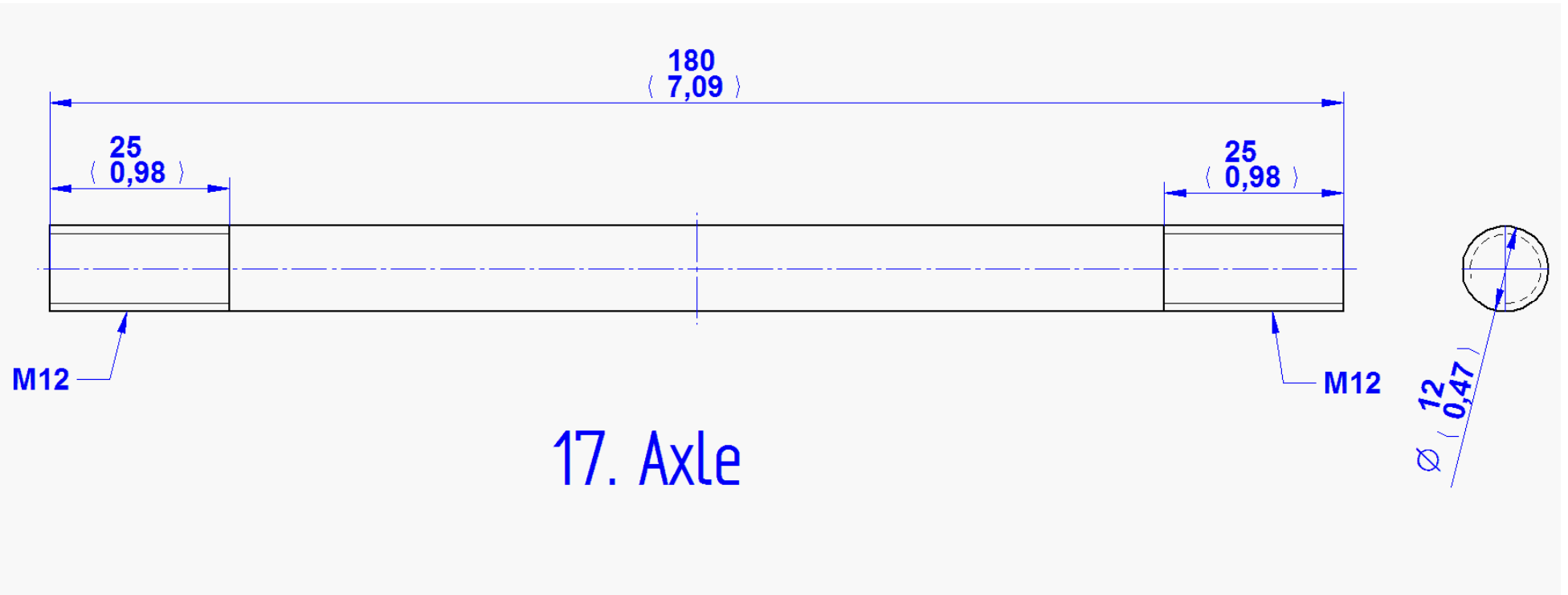
11. Main Support



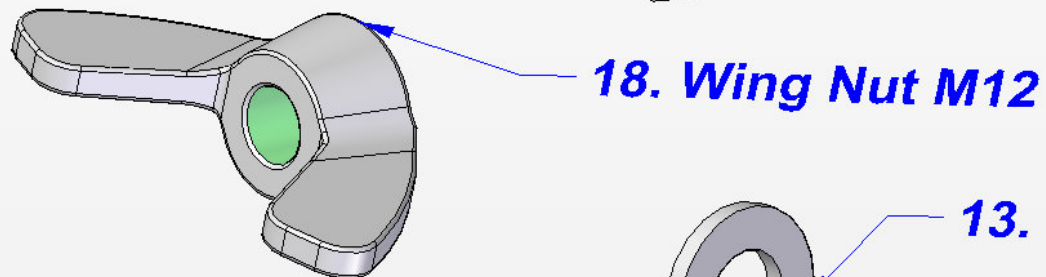
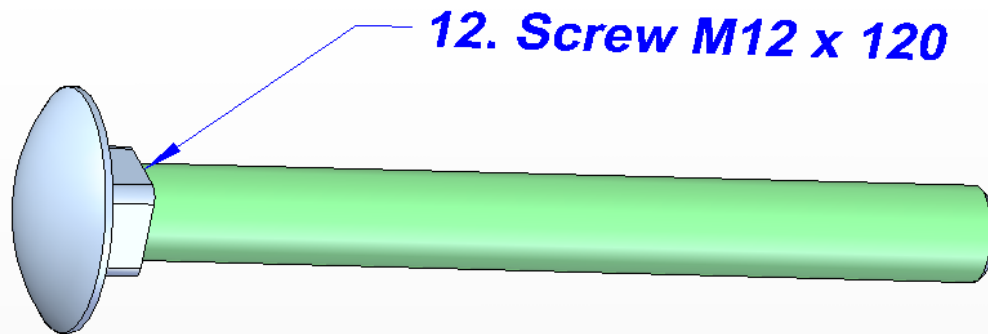




16. Leg Plate



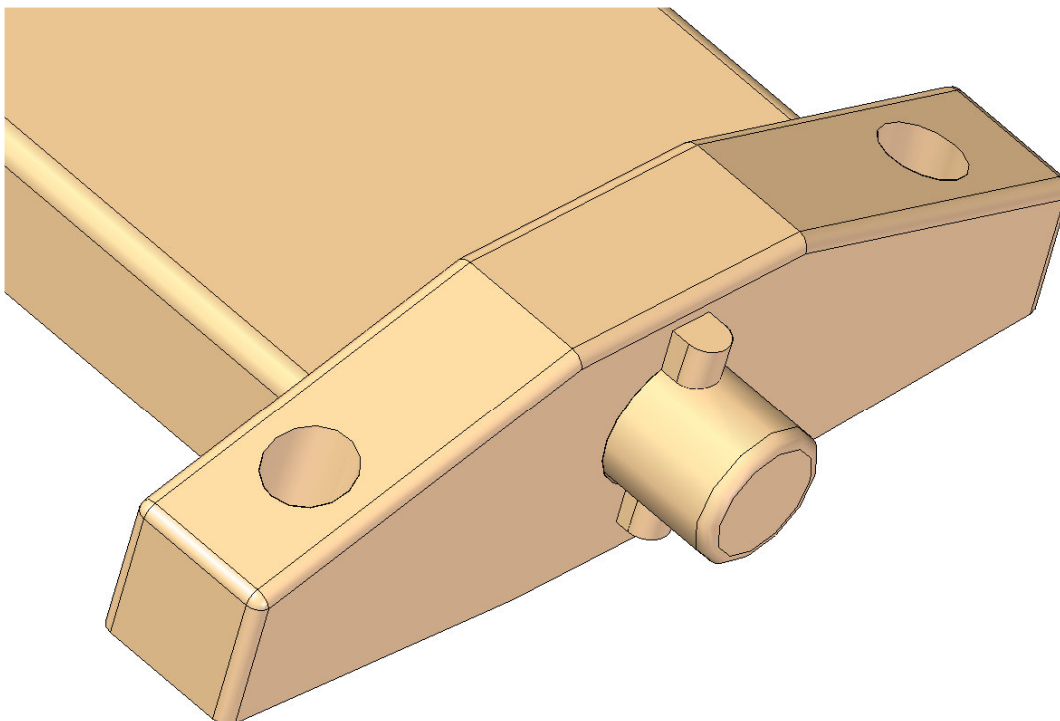
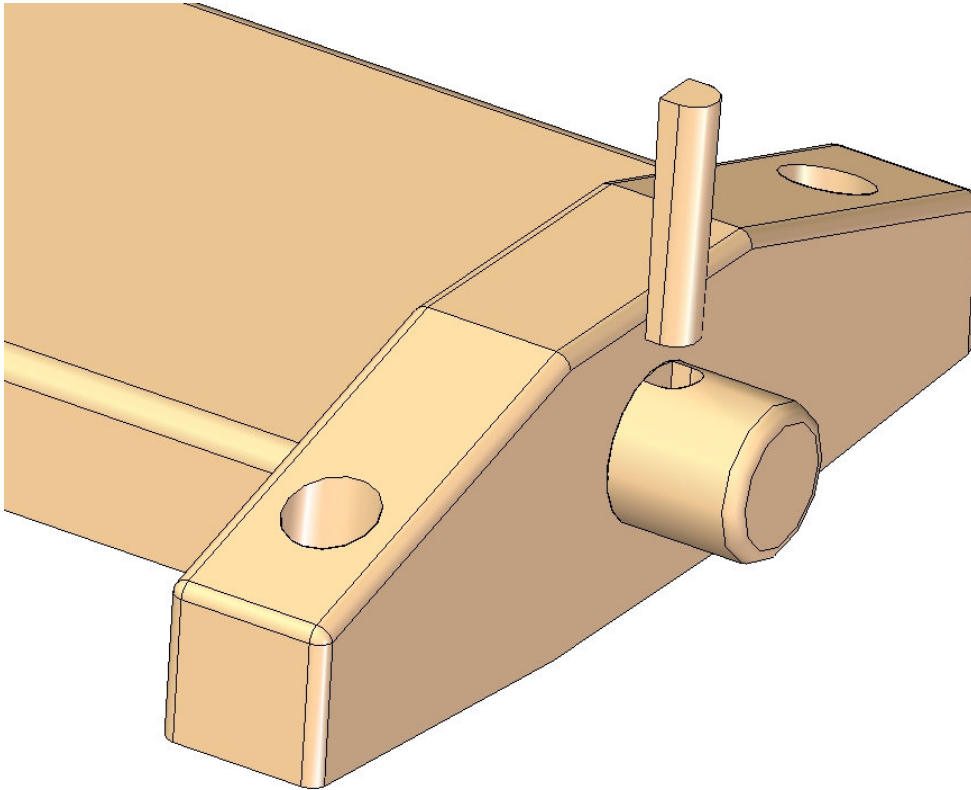
Standard Parts



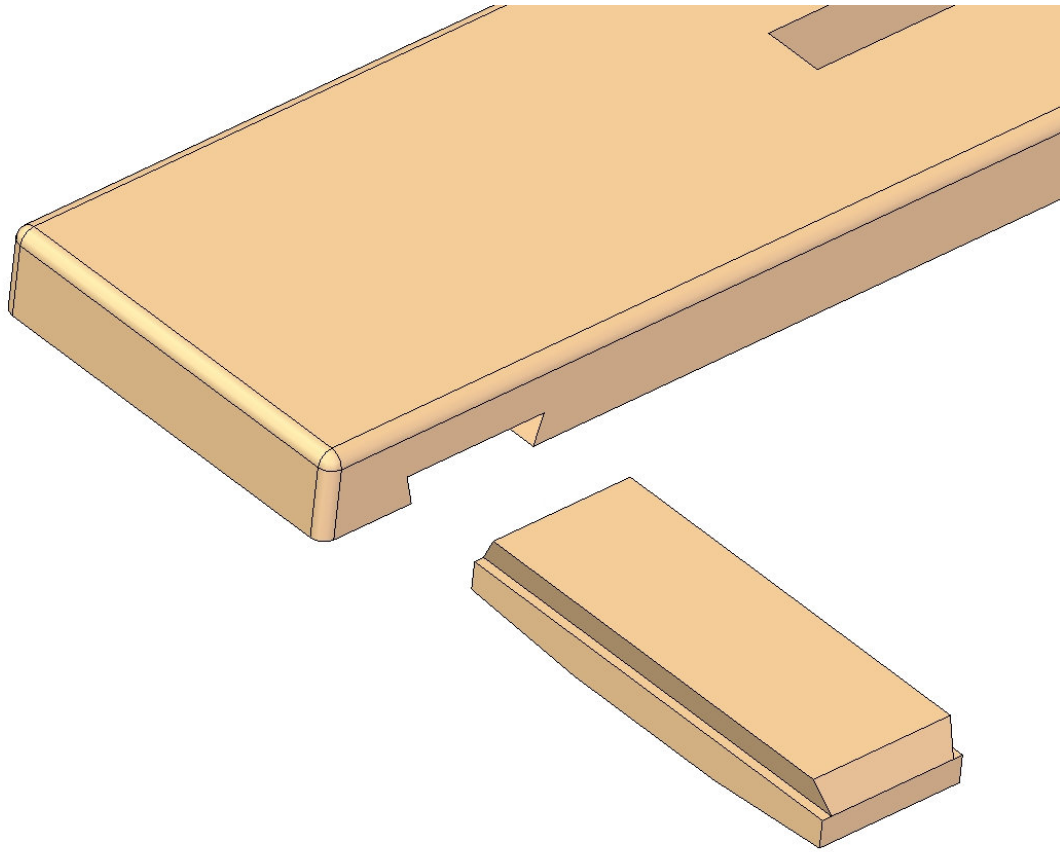
Assemblage Instruction

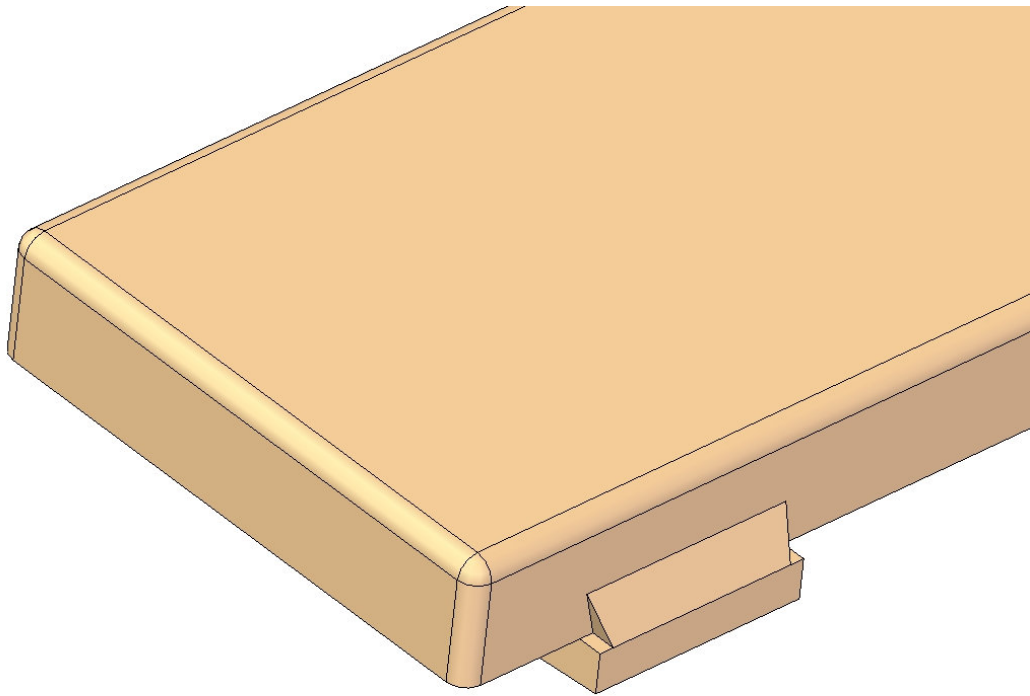
Make the components as given on the pictures.

1. Fasten the Front Support (item 2) to the Base (item 1) by using Wedge (item 6)

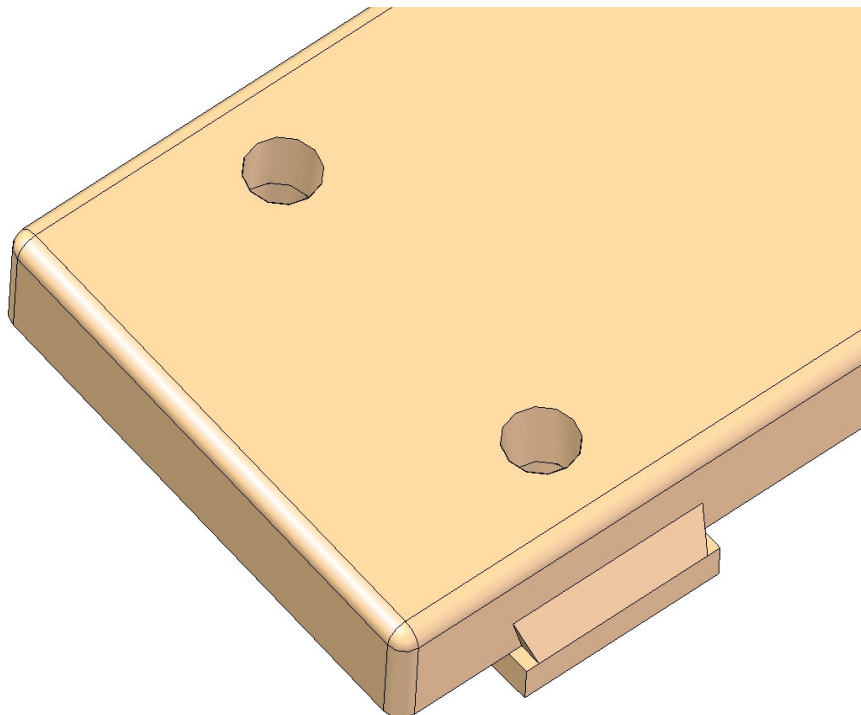


2. Place the Back Support (item 3) into the groove on the Base (item 1).

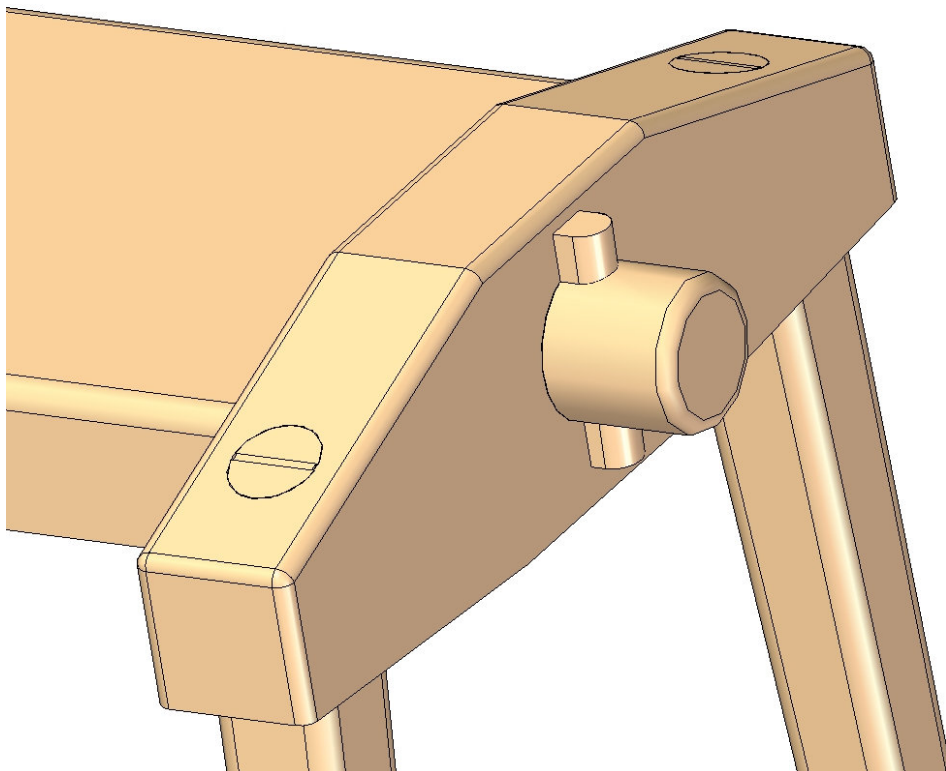
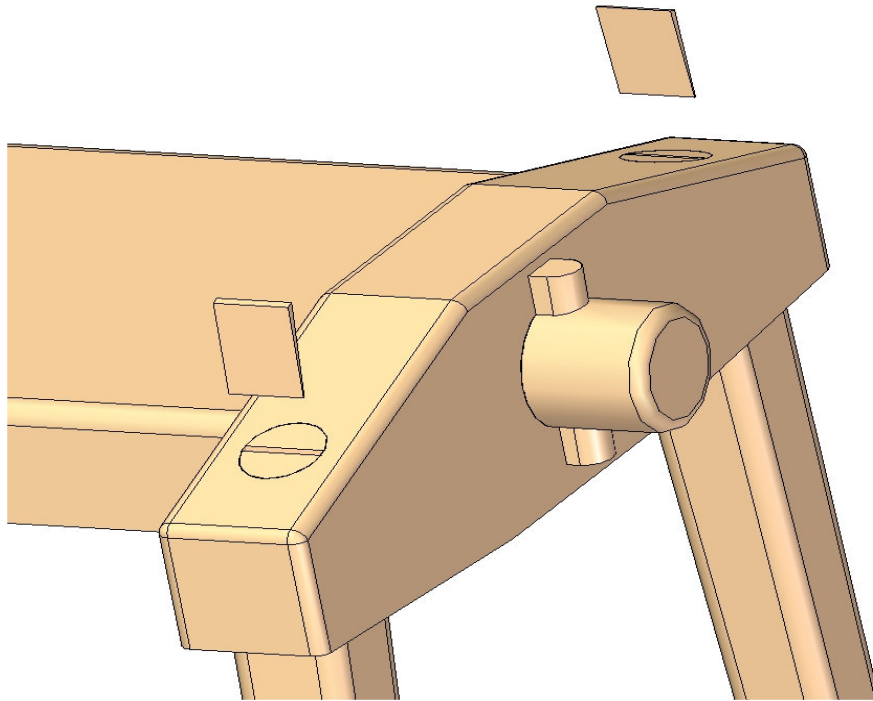


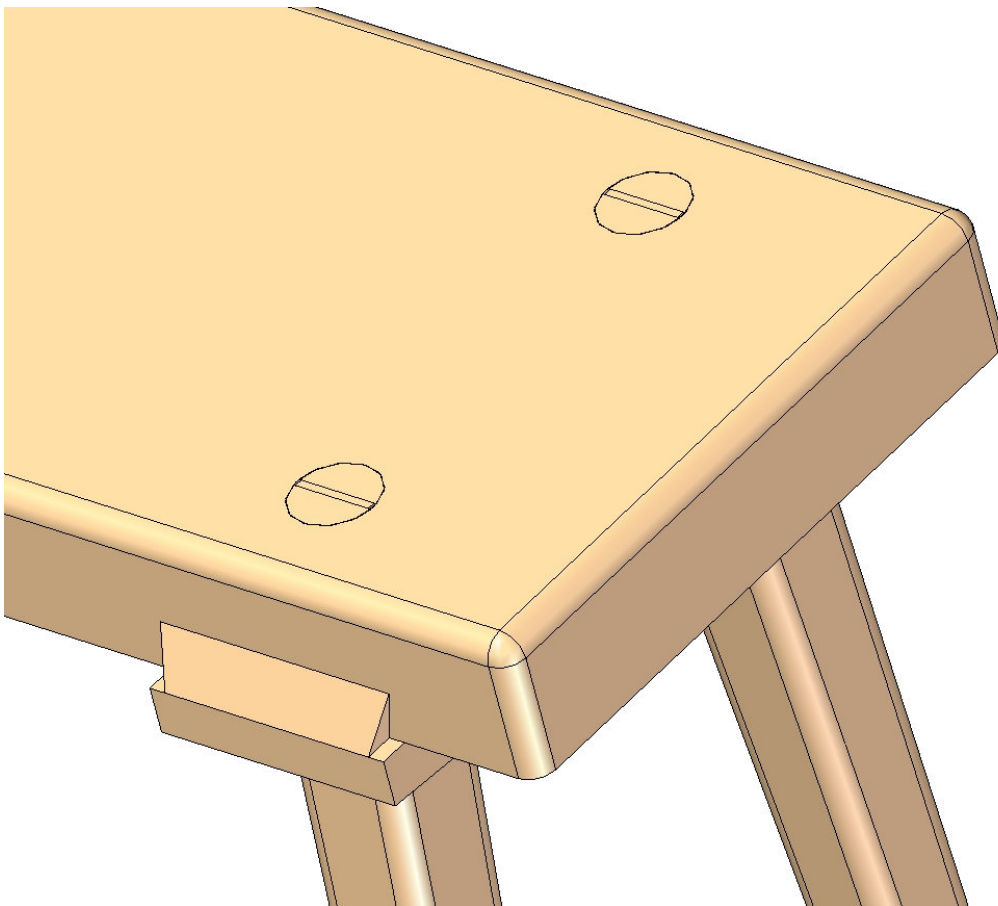
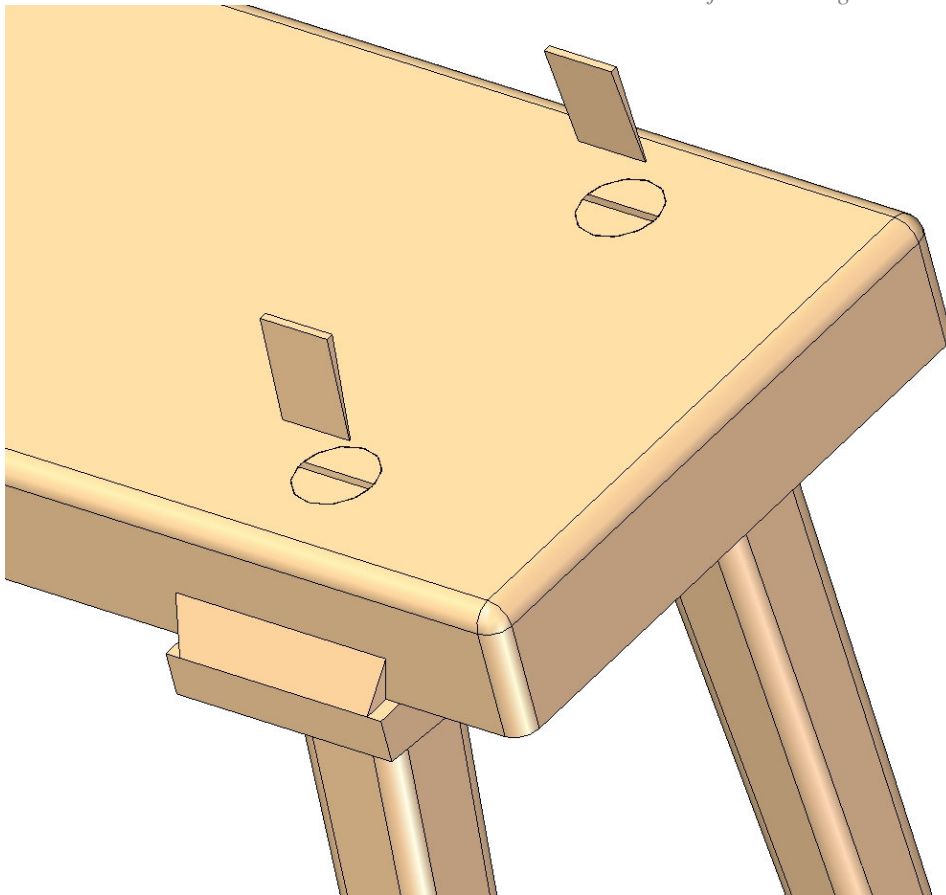


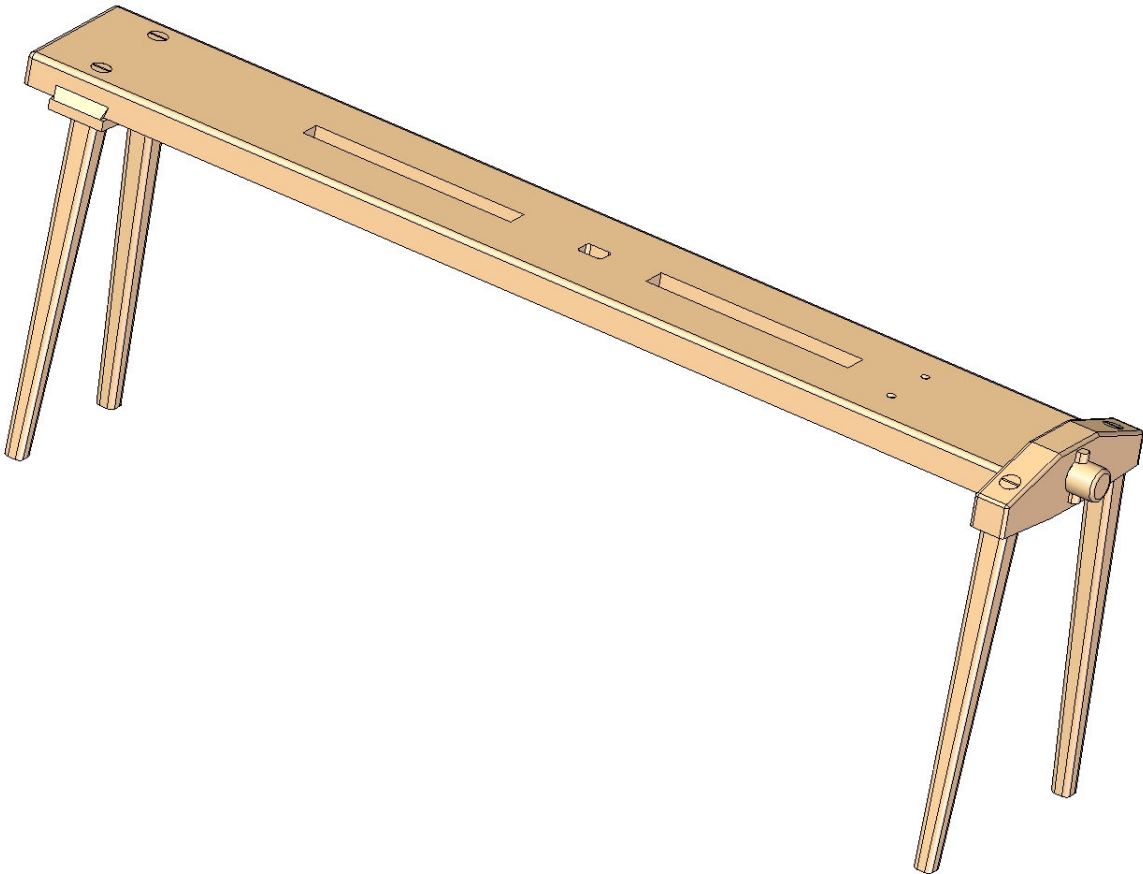
Drill holes



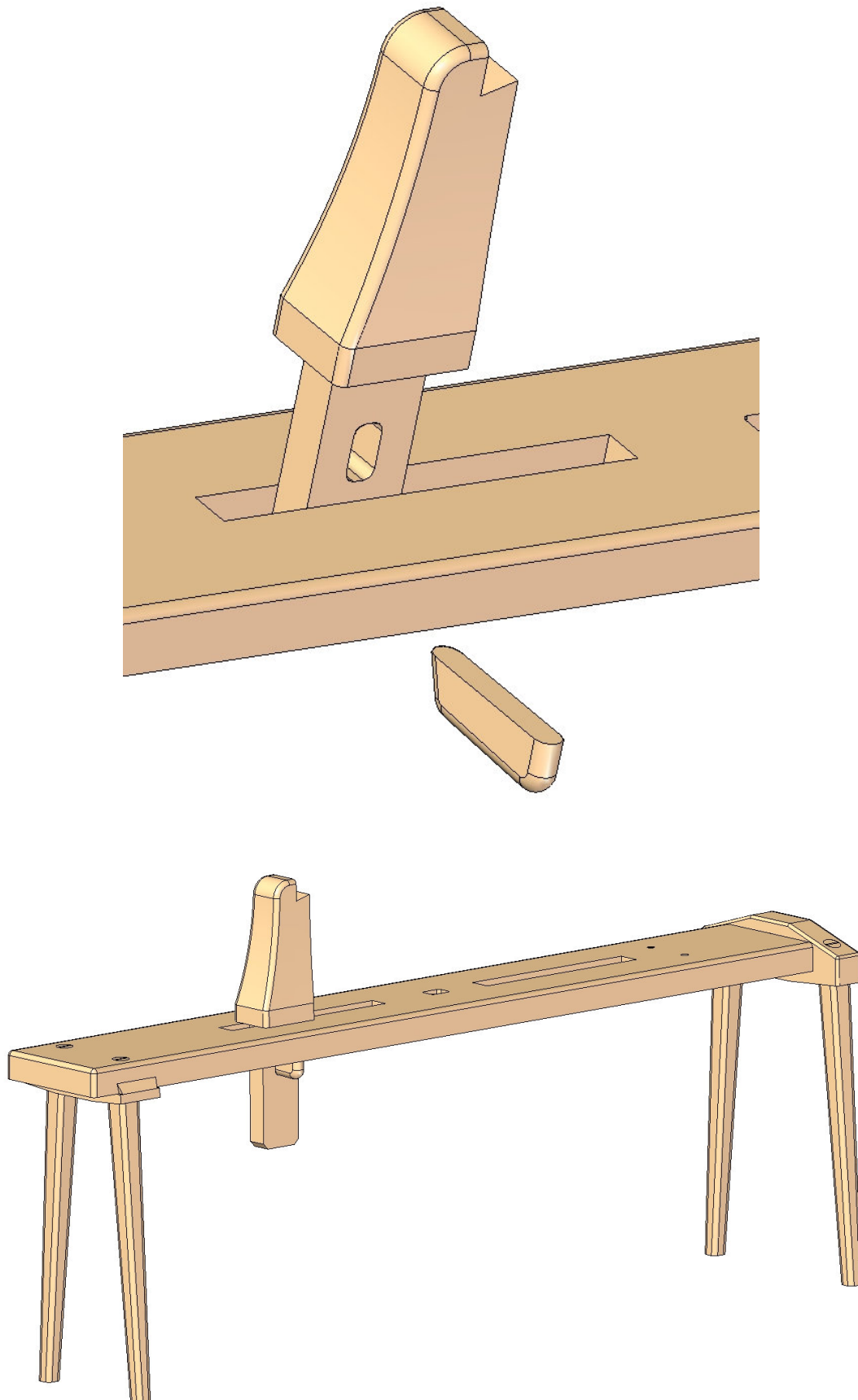
3. Set all the four Legs (item 4) in suitable holes and slowly chock the Thin Wedge (item 5) into the cutted groove. Do not forget to put glue on Thin Wedge (item 5) surface. At the end, cut off the pieces of Thin Wedge (item 5) that remained to stick out.



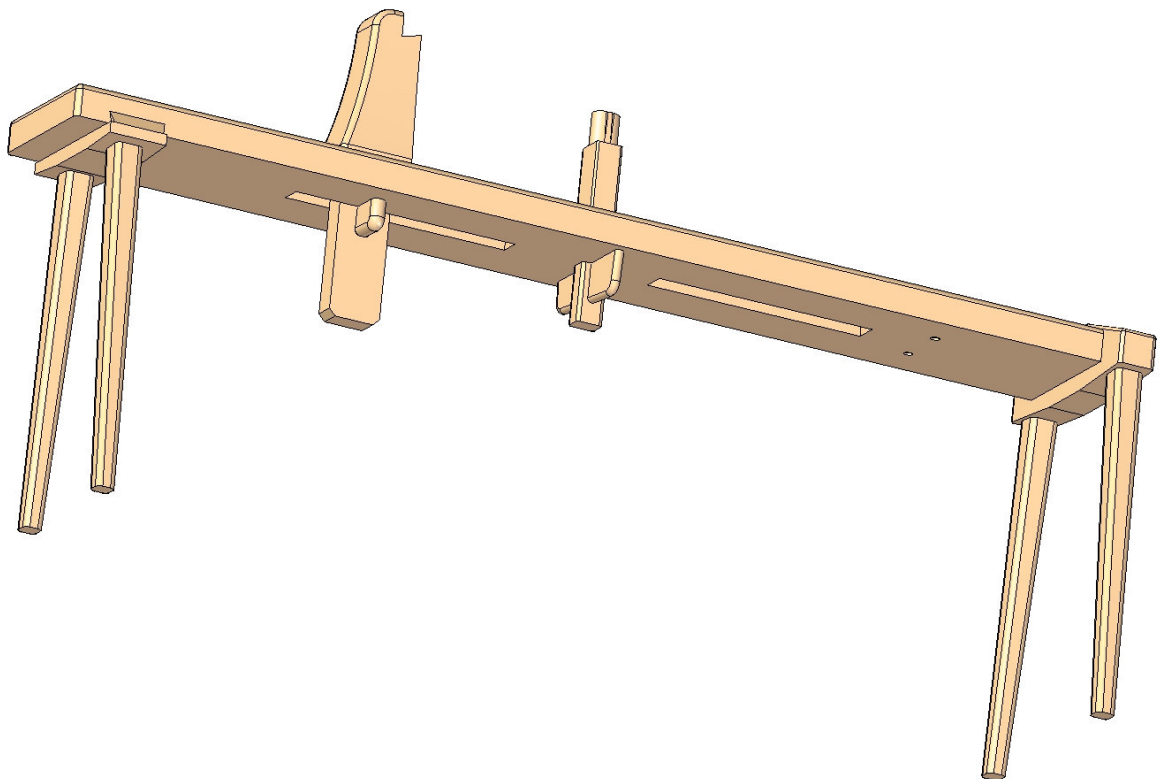
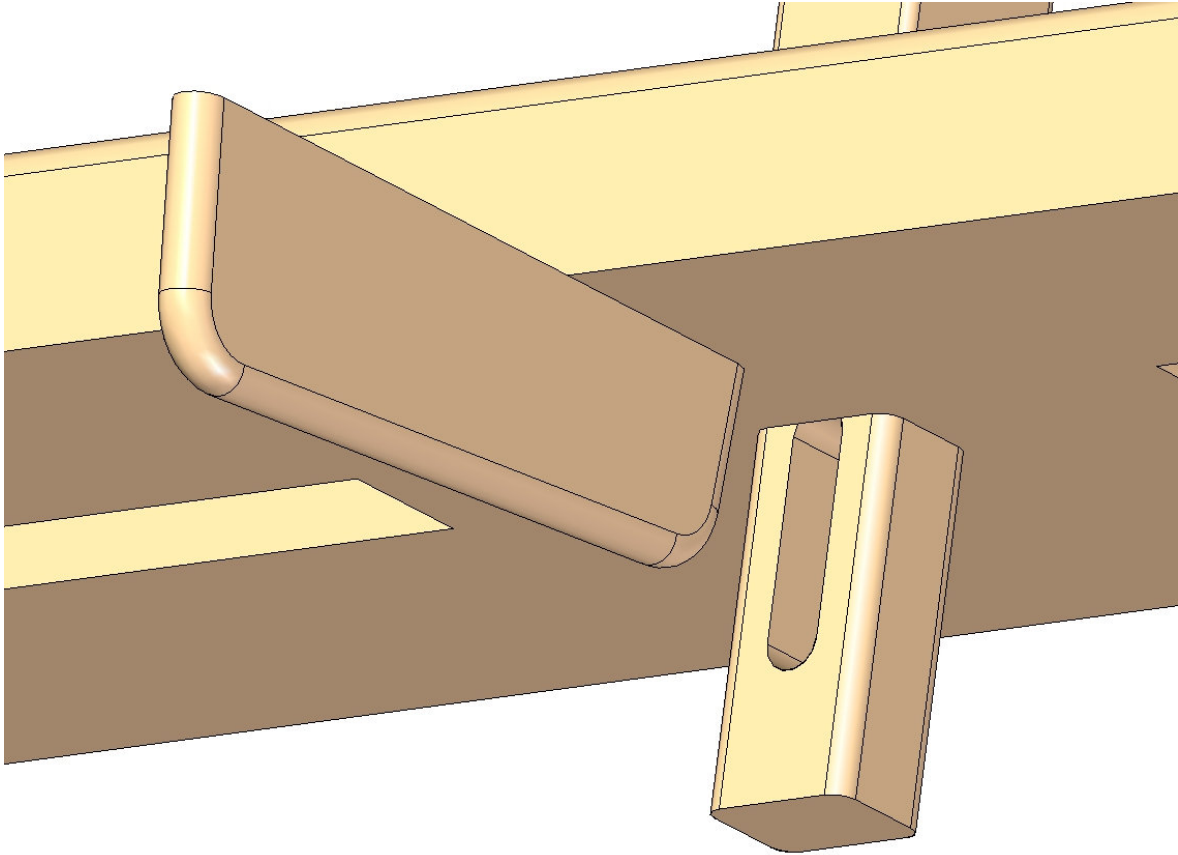




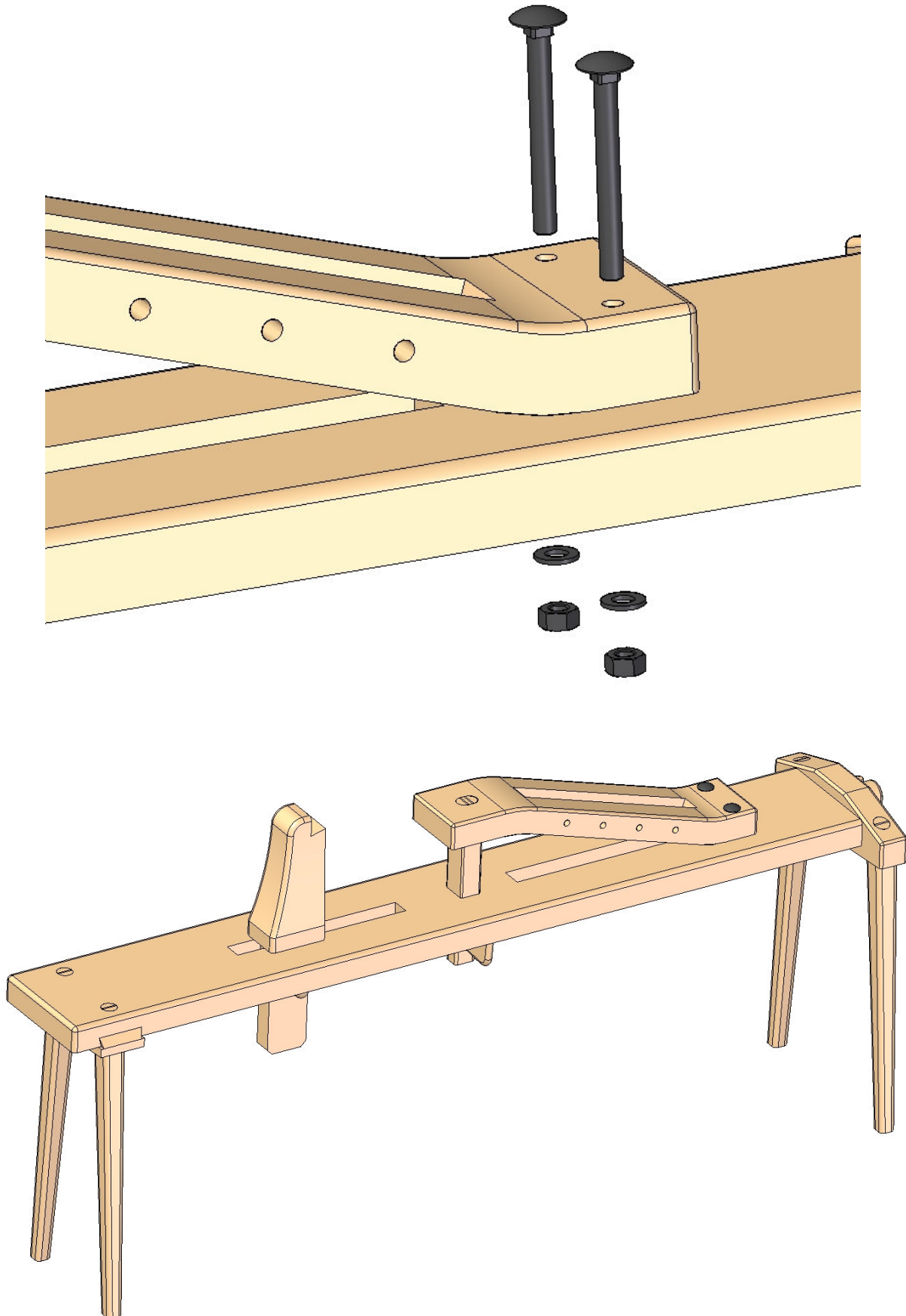
4. Fasten the Support (item 7) to the Base (item 1) using the Fitting Back (item 8).



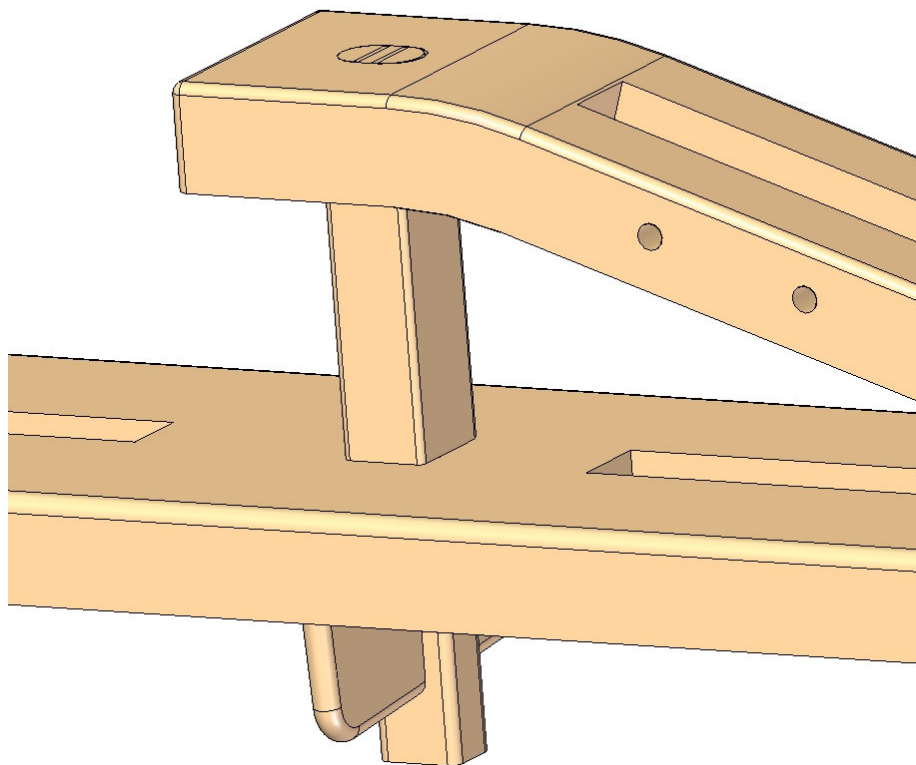
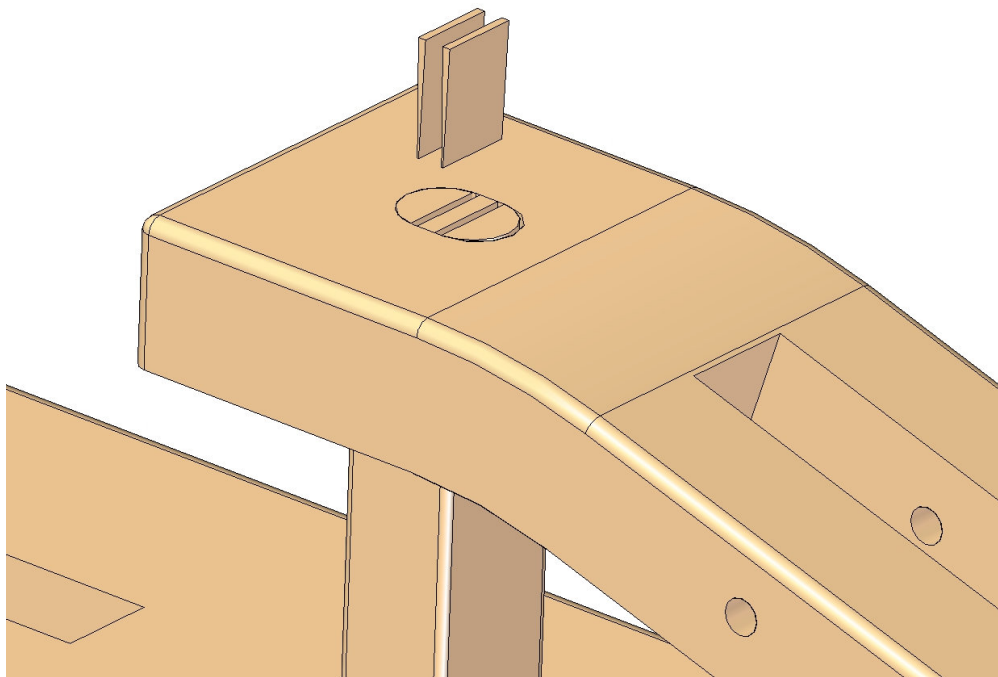
5. Fasten the Pillar (item 9) to the Base (item 1) using the Fitting Front (item 10).



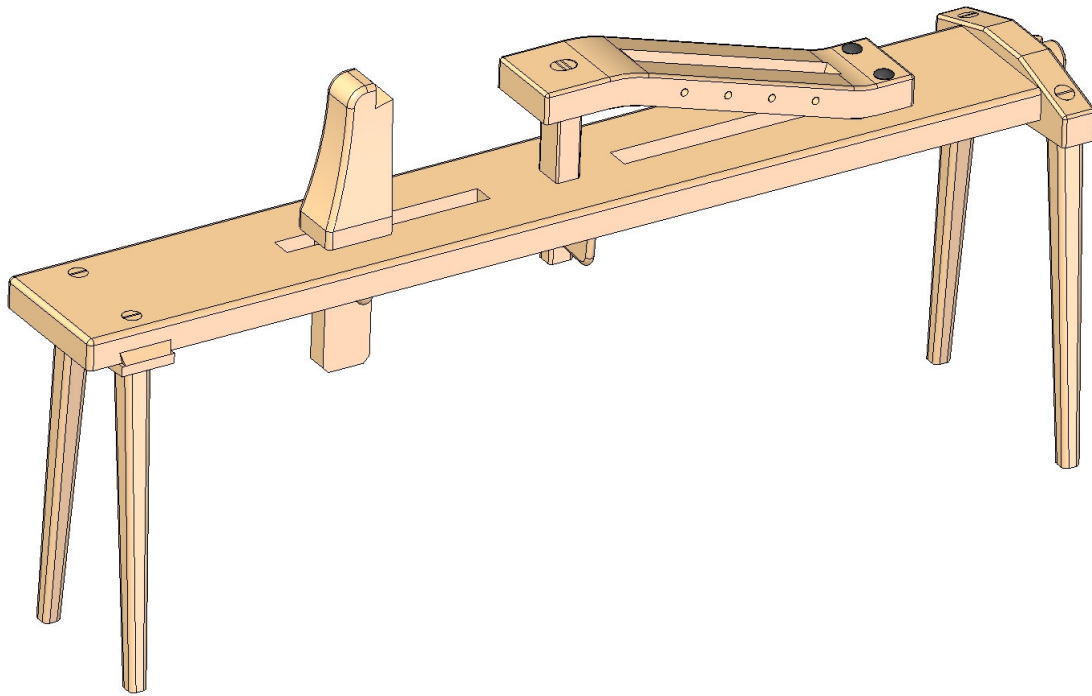
6. Fasten the Main Support (item 11) to the Base (item 1) with fasteners.



7. The other end of the Main Support (item 11) fix to the Pillar using the two Thin Wedges (item 5)



In the end, you should get an assembly shown on the next picture.



There are two versions of the Carving Bench.

VERSION 1 - The carving bench for carving with a double-edged chisel. A piece of wood that needs to be carved is being placed between the Support (item 7) and Lever (item 15). By pressing the Leg Plate (item 16), a pressure on the wood piece will fix it during the carving. This kind of carving is being done with a double-edged chisel and cutting off the thin, long pieces of wood by special blade.

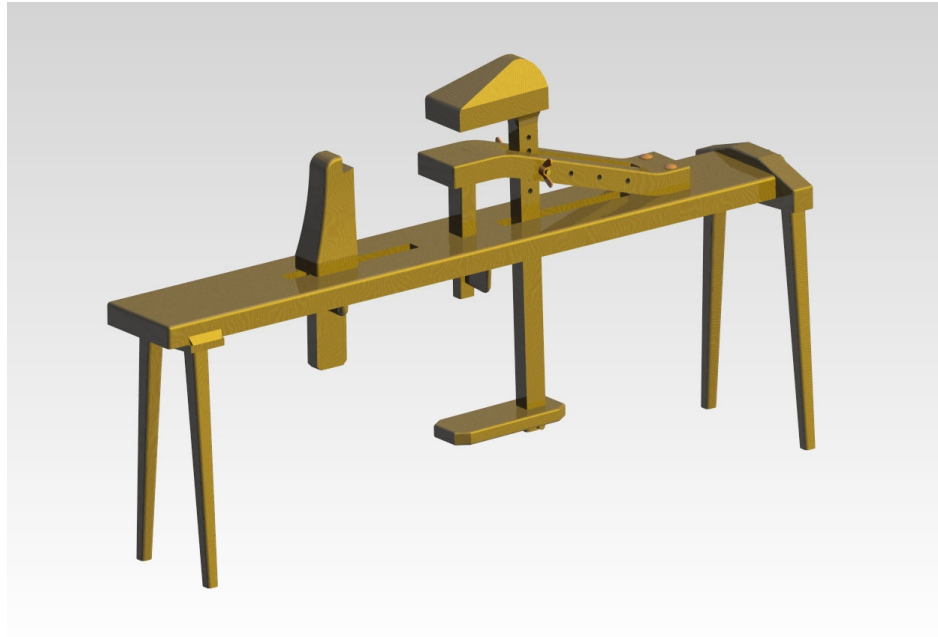
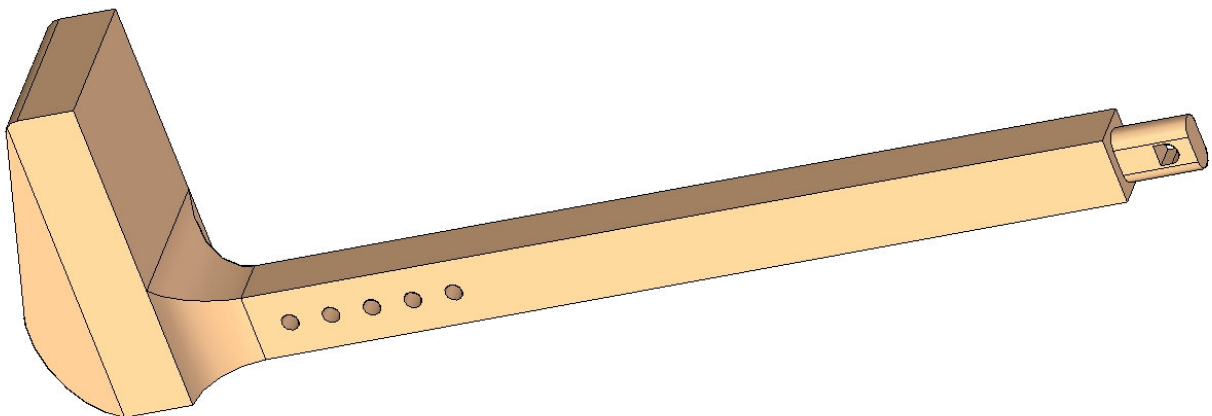
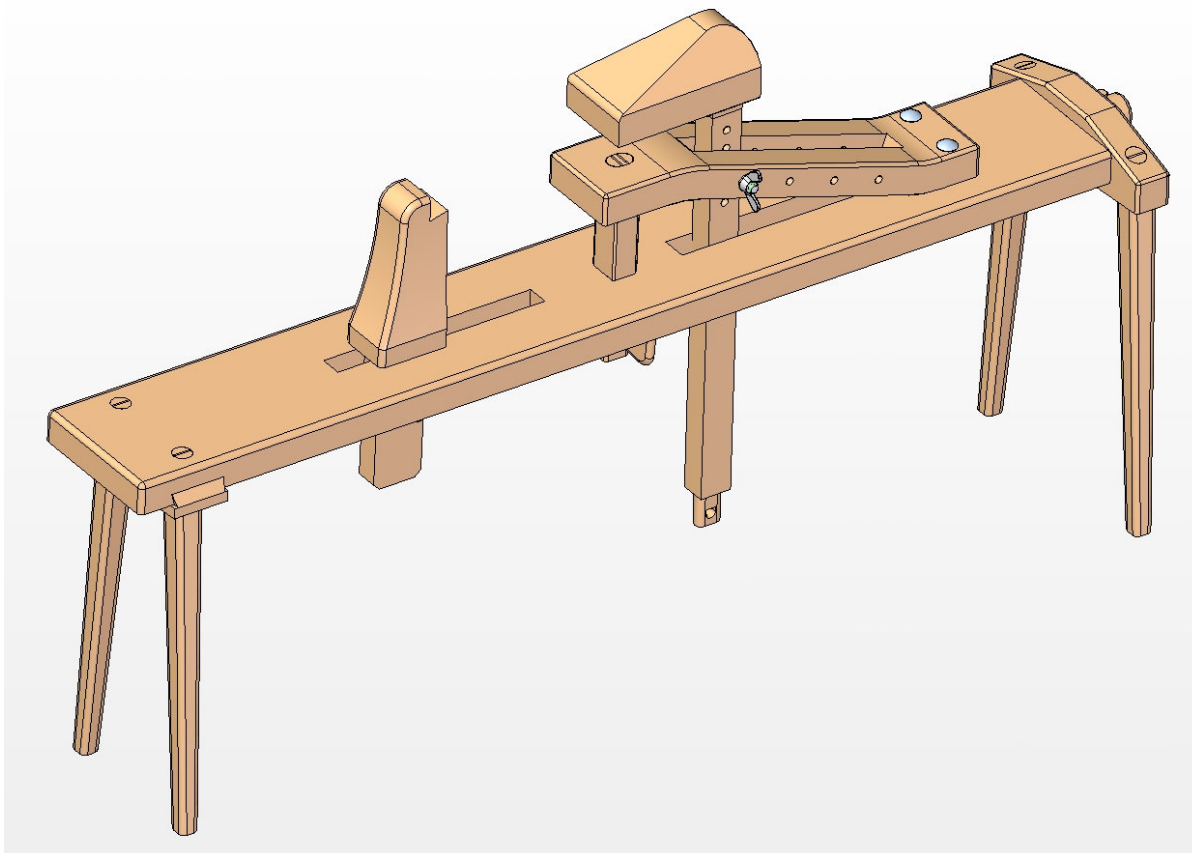
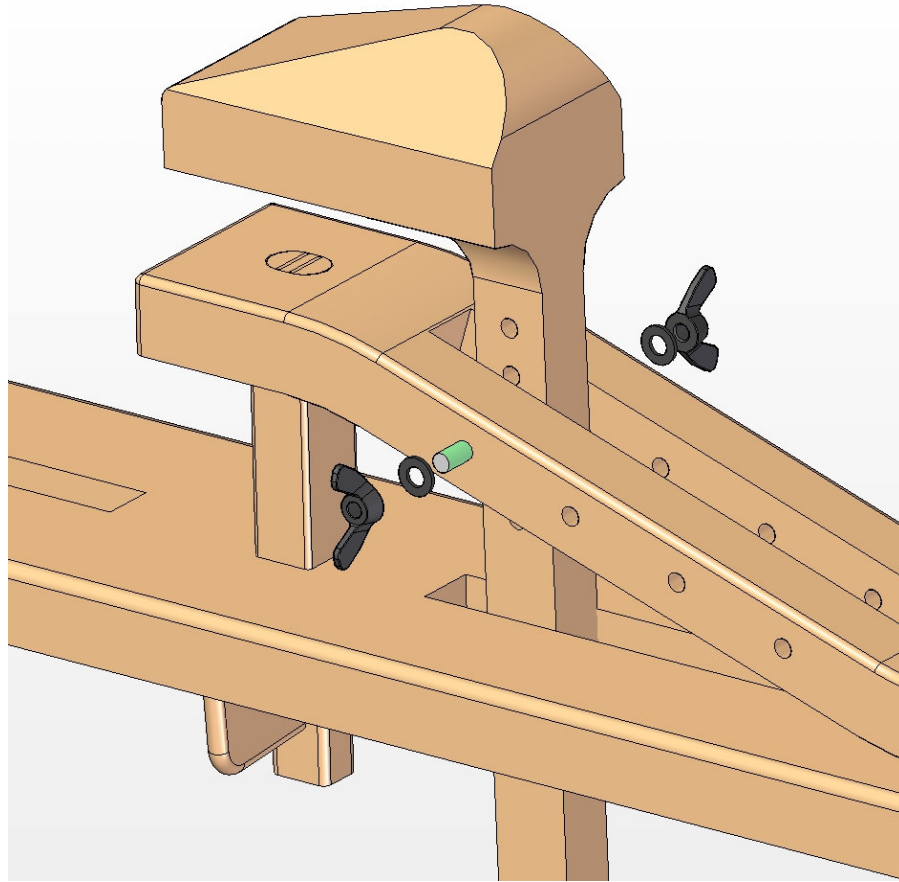


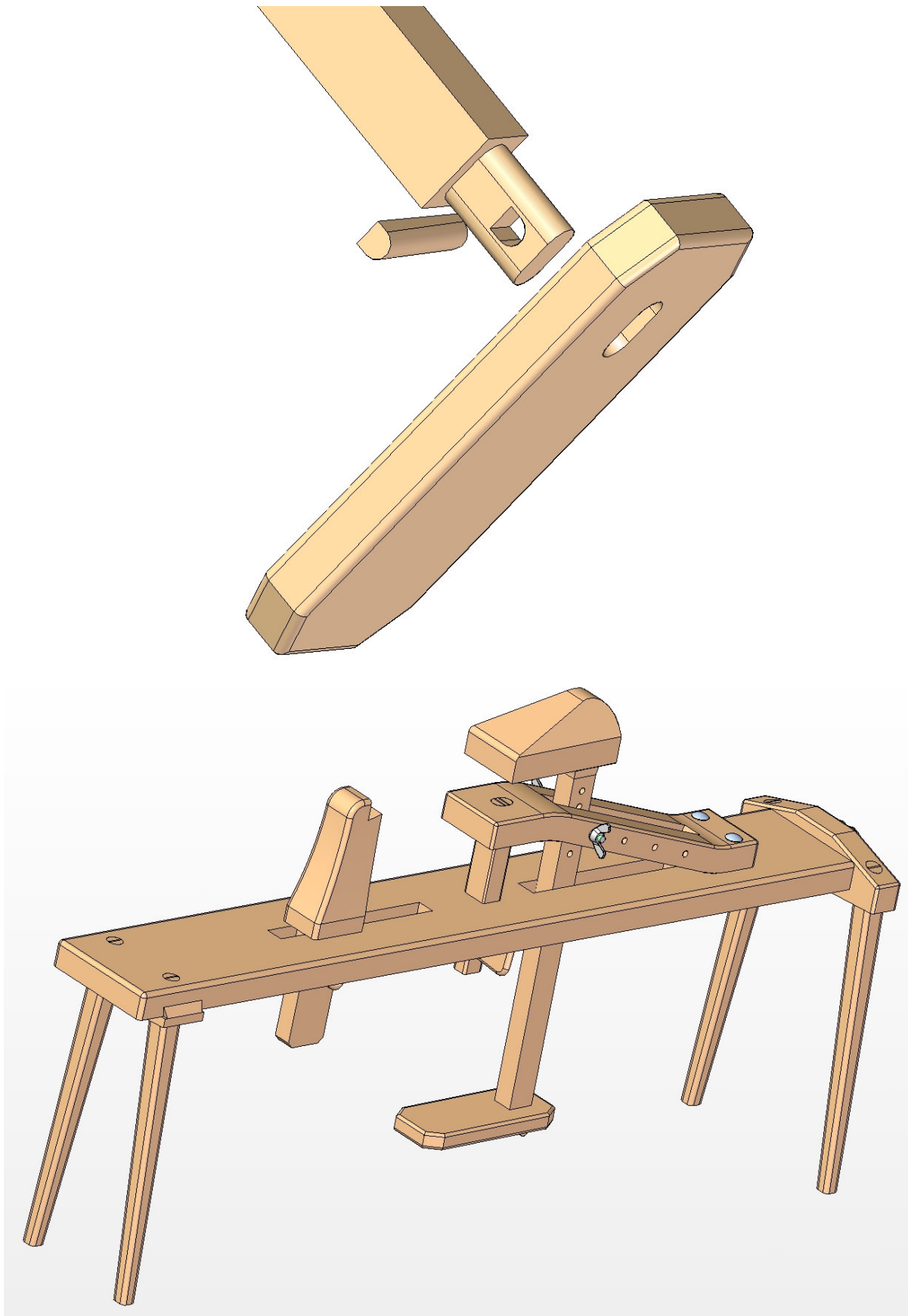
Image of Lever (item 15).



Fasten the Lever (item 15) to the Main Support (item 11) with fasteners, as given on picture.



Fasten the Leg Plate (item 16) to the Lever (item 15) using Wedge (item 6).



Classical carving bench for carving with hammer and chisel. A piece of wood that needs to be carved is being placed between the Support (item 7) and Lever (item 15). By pressing the Leg Plate (item 16), a pressure on the wood piece will fix it during the carving.

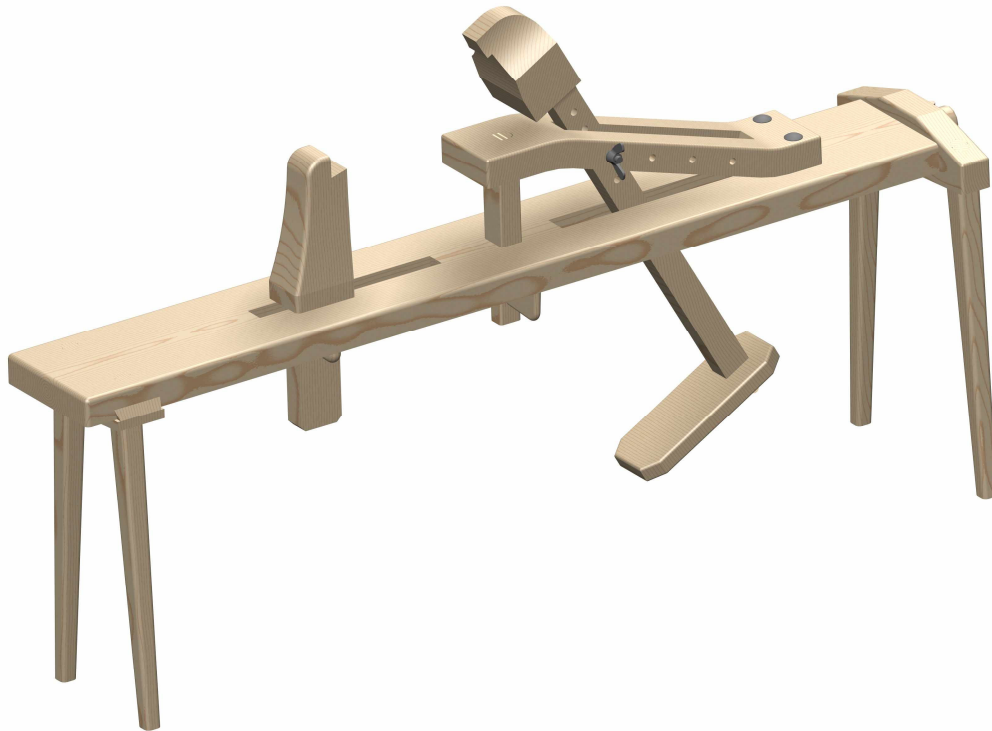
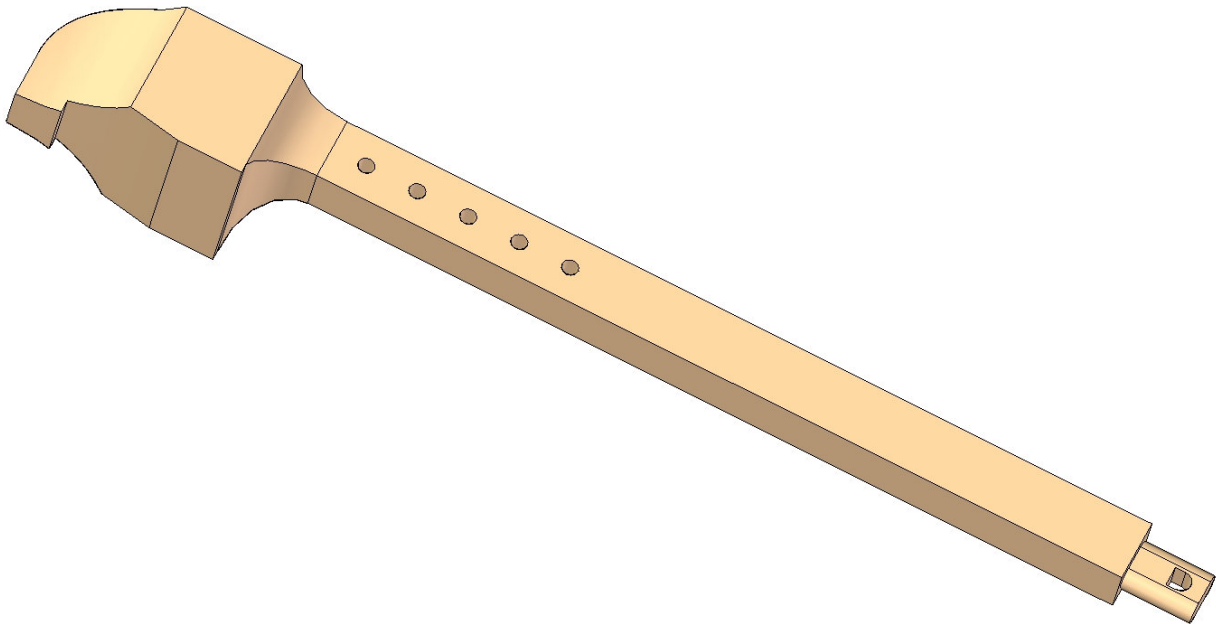
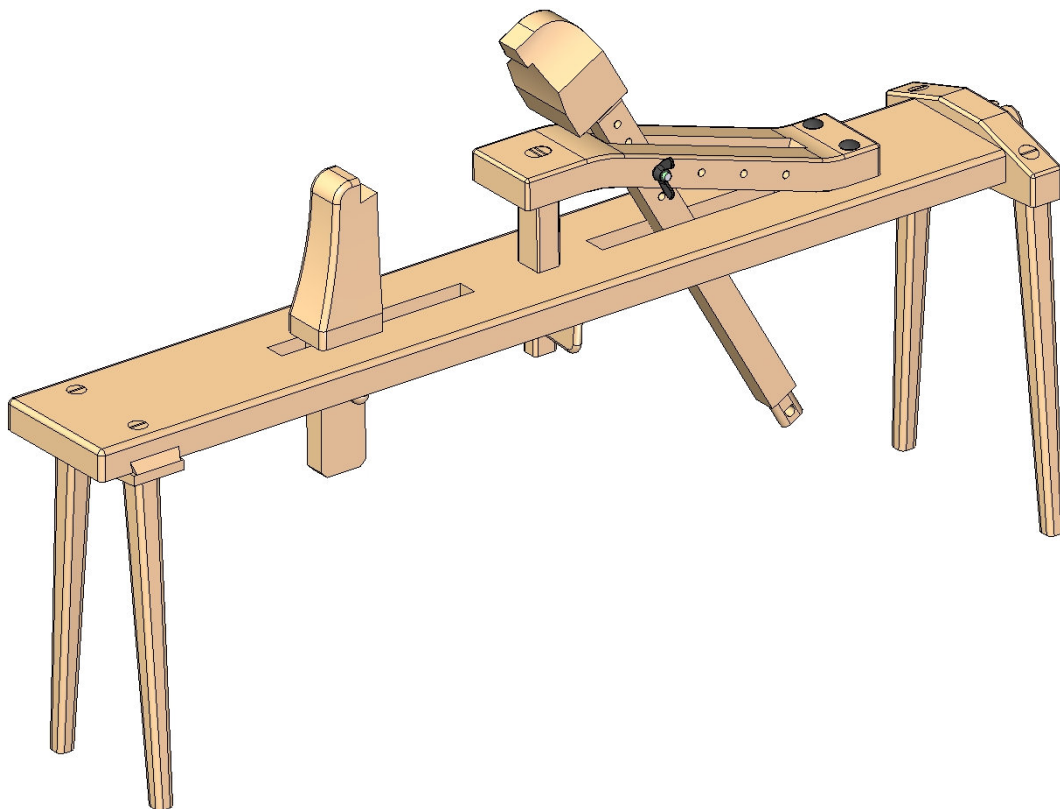
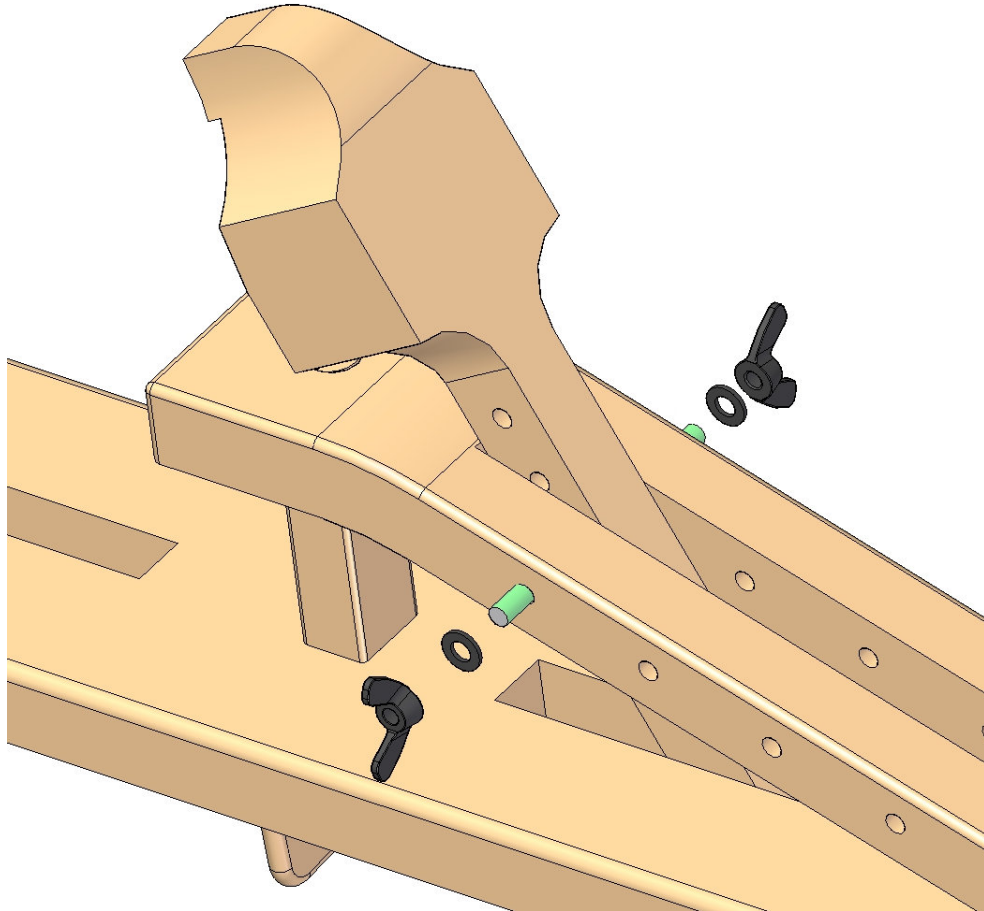


Image of Lever (item 15).



Fasten the Lever (item 15) to the Main Support (item 11) with fasteners, as given on picture.



Fasten the Leg Plate (item 16) to the Lever (item 15) using Wedge (item 6).

